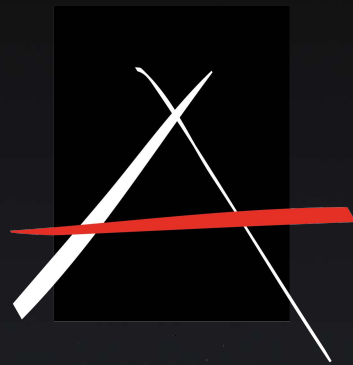


Allure Design  
Magneet rail

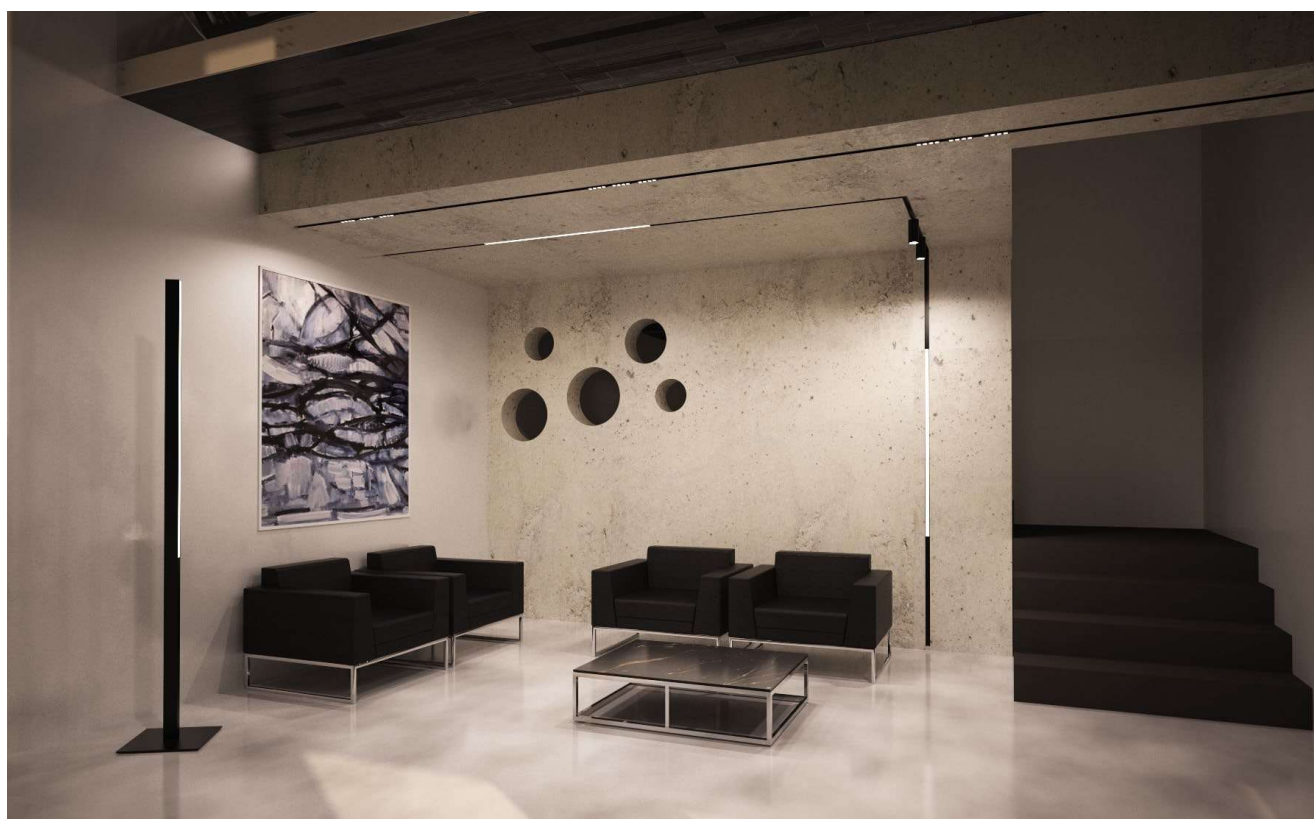


# Smart Lighting Solutions

## 48V Low Voltage Track System

### Why low voltage 48V mini track?

- Low voltage products are very small in size and have an minimalistic look.
- Low voltage fixture can be moved very easily and can be used in applications where lighting fixtures are accessible to people, without any risk.
- Low voltage tracks can be used for smart lighting, easy to control whole system of all lights.



# Smart Lighting, More Comfortable

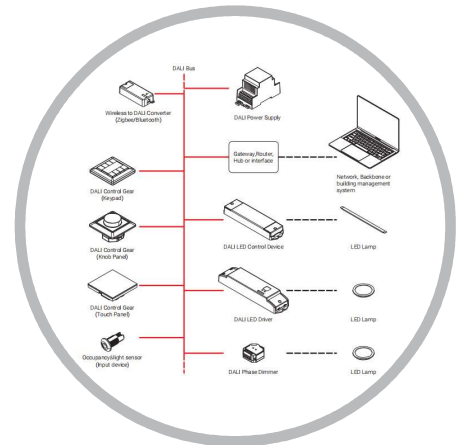
## Easy Smart Lighting Solutions

### DALI, RF, CASAMBI



#### DALI Control

Wired connection  
Brightness 0.1~100% dimming  
Tunable white 2700~5700K



#### RF Remote Control

Wireless controllers  
Brightness 0.1~100% dimming  
Tunable white 2700~5700K



#### CASAMBI App Control

Mobile bluetooth wireless  
Brightness 1~100% dimming  
Tunable white 2700~5700K



# INDEX

## 48V Low Voltage Smart Lighting

### 48V Tracks •05



T1



T2



T3



T4



T5

### 48V Track Accessories •09



HT1



HT2



HT3



HT4



VT1



VT2



VT3



VT4



ET1



ET2



ET3



ET4



ET5



PTX



ITX



LTX



CT2



PT2



DS1000/ 2000/ 3000



POWER SUPPLY: AC100-240V TO DC48V



48V 10/11 Series

• 11



D35

D45

D55

48V 20/21 Series

• 29



D62

D90

48V Linear Light • 35



LL22

LS22

LA22

48V 01 Series

• 45



TL01 D30A

TL01 D40A

TL01 D40B

TL01 D50B

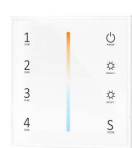
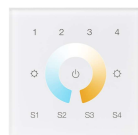
TL01 D55B

TL01 D90A

TL01 D100A

TL01 D40C

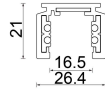
Control System DALI, RF Remote Control • 63



# 48V Low Voltage LV26 Series Track System Tracks



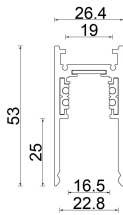
T1



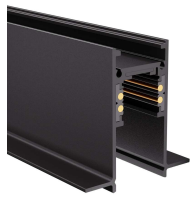
Model No.	Description	Color of housing
ALL-LV26T1-1000	T1 48V Mini Track 1.0 Meter	Black/ White
ALL-LV26T1-1500	T1 48V Mini Track 1.5 Meter	Black/ White
ALL-LV26T1-2000	T1 48V Mini Track 2.0 Meter	Black/ White
ALL-LV26T1-3000	T1 48V Mini Track 3.0 Meter	Black/ White



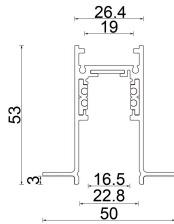
T2



Model No.	Description	Color of housing
ALL-LV26T2-1000	T2 48V High Track 1.0 Meter	Black/ White
ALL-LV26T2-1500	T2 48V High Track 1.5 Meter	Black/ White
ALL-LV26T2-2000	T2 48V High Track 2.0 Meter	Black/ White
ALL-LV26T2-3000	T2 48V High Track 3.0 Meter	Black/ White



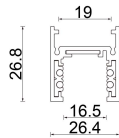
T3



Model No.	Description	Color of housing
ALL-LV26T3-1000	T3 48V Trimless High Track 1.0 Meter	Black/ White
ALL-LV26T3-1500	T3 48V Trimless High Track 1.5 Meter	Black/ White
ALL-LV26T3-2000	T3 48V Trimless High Track 2.0 Meter	Black/ White
ALL-LV26T3-3000	T3 48V Trimless High Track 3.0 Meter	Black/ White



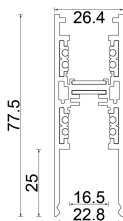
T4



Model No.	Description	Color of housing
ALL-LV26T4-1000	T4 48V Standard Track 1.0 Meter	Black/ White
ALL-LV26T4-1500	T4 48V Standard Track 1.5 Meter	Black/ White
ALL-LV26T4-2000	T4 48V Standard Track 2.0 Meter	Black/ White
ALL-LV26T4-3000	T4 48V Standard Track 3.0 Meter	Black/ White

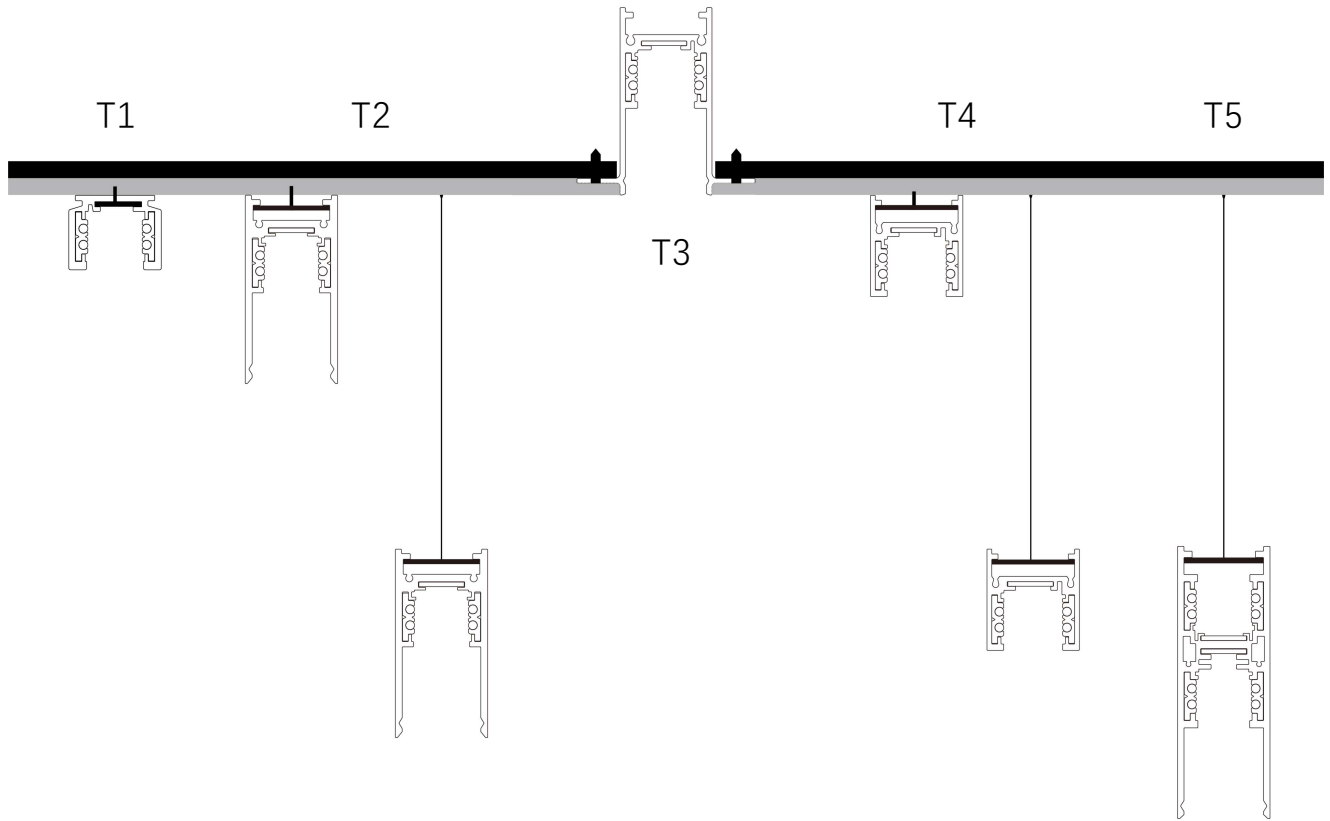


T5



Model No.	Description	Color of housing
ALL-LV26T5-1000	T5 48V Up-Down Track 1.0 Meter	Black/ White
ALL-LV26T5-1500	T5 48V Up-Down Track 1.5 Meter	Black/ White
ALL-LV26T5-2000	T5 48V Up-Down Track 2.0 Meter	Black/ White
ALL-LV26T5-3000	T5 48V Up-Down Track 3.0 Meter	Black/ White

# Installation



T1 Short Arm For T1/T4 Type Track, T2 Long Arm For T2/T3/T5 Track

A10 A11 Series



A20 A21 Series

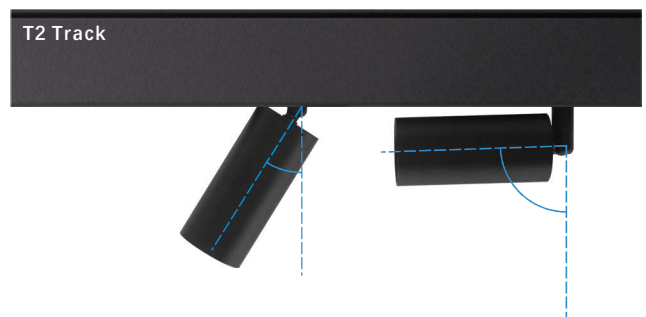


T1 arm

T2 arm

T2 arm

TL01 Series



T1 arm

T2 arm

T1 arm

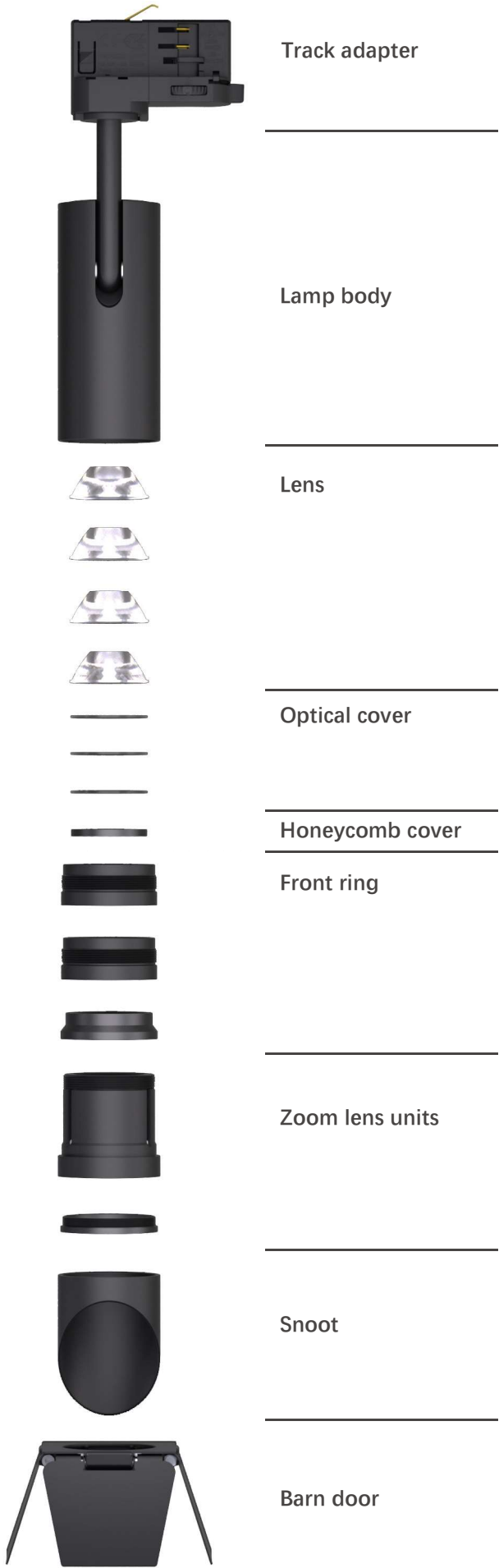
T2 arm

T1 arm in T2 track, can't be adjusted to the top side

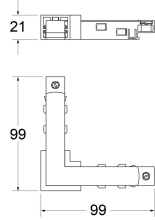


Accessories

Professional  
Track light



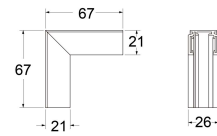
# Accessories



**ALL-LV26AC-HT1**

T1 Horizontal L-Track Housing+Connector HT1(For T1 Track Only)

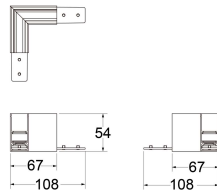
Black/ White



**ALL-LV26AC-VT1**

T1 Vertical L-Track Housing VT1 (For Connector LTX)

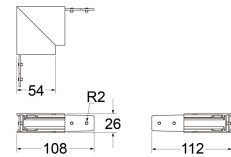
Black/ White



**ALL-LV26AC-HT2**

T2 Horizontal L-Track Housing HT2 (For Connector LTX)

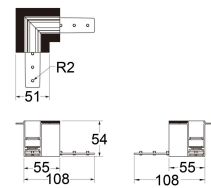
Black/ White



**ALL-LV26AC-VT2**

T2 Vertical L-Track Housing VT2 (For Connector LTX)

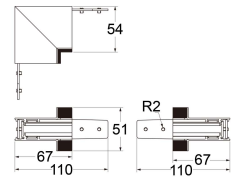
Black/ White



**ALL-LV26AC-HT3**

T3 Horizontal L-Track Housing HT3 (For Connector LTX)

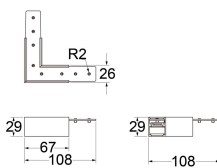
Black/ White



**ALL-LV26AC-VT3**

T3 Vertical L-Track Housing VT3 (For Connector LTX)

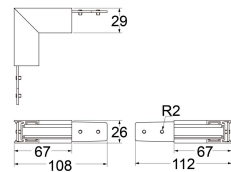
Black/ White



**ALL-LV26AC-HT4**

T4 Horizontal L-Track Housing HT4 (For Connector LT1)

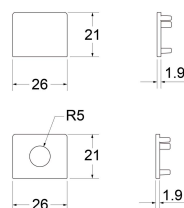
Black/ White



**ALL-LV26AC-VT4**

T4 Vertical L-Track Housing VT4 (For Connector LTX)

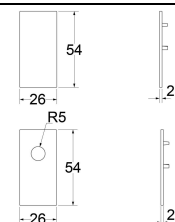
Black/ White



**ALL-LV26TA-ET1**

T1 End Cap ET1

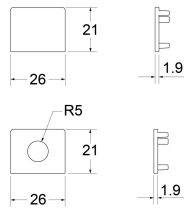
Black/ White



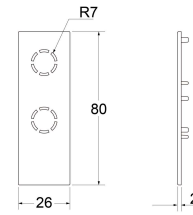
**ALL-LV26TA-ET2 (ALL-LV26TA-ET3) End**

Cap ET2/ET3

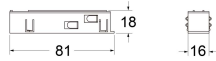
Black/ White



**ALL-LV26TA-ET4**  
T4 End Cap ET4  
Black/ White



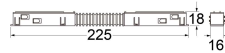
**ALL-LV26TA-ET5**  
T5 End Cap ET5  
Black/ White



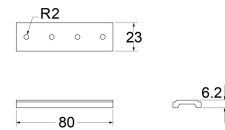
**ALL-LV26AC-PTX Power**  
Feed (For All Tracks) Black/  
White



**ALL-LV26AC-ITX**  
Straight Connector (For All Tracks)  
Black/



**ALL-LV26AC-LTX**  
Flexible Connector Horizontal or Vertical (For All Tracks)  
Black/ White



**ALL-LV26TA-CT2**  
Aluminum Connection (For T2/ T3/ T4/ T5)  
Black/ White



**ALL-LV26T2-DS1000/ 2000/ 3000**  
Dust Cover 1.0/ 2.0/ 3.0 Meter (For T2/ T3/ T5)  
Black/ White



**ALL-LV26TA-PT2**  
Suspension Pendant Set Steel Wire 1.5 Meter (For T2/ T3/ T4/ T5)  
Black/ White



**POWER SUPPLY (Inside Track For T2/T3/T5 Track)**  
100W      150W 230W  
AC200-240V To DC48V



**POWER SUPPLY (Outside The Track Rail)**  
150W 250W      50W 100W 150W 200W 350W  
AC200-240V To DC48V      AC85-264V To DC48V

# 10/11 Series

## 48V Smart Lighting DALI, Remote Control

Zoomable



1035A

Fixed lens



1135L



1045A



1145L



1055A



1155L



Black



Black  
+Lens cover



Black  
+ Honeycomb



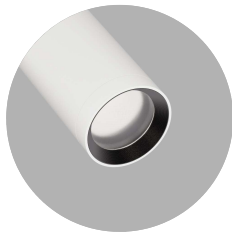
Black  
+Snoot



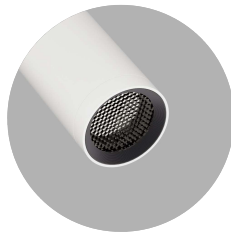
Black  
+Barn door



White



White  
+Lens cover



White  
+ Honeycomb



White  
+Snoot



White  
+Barn door



Black



White



White+Black ring



Black+ Honeycomb



White+Honeycomb

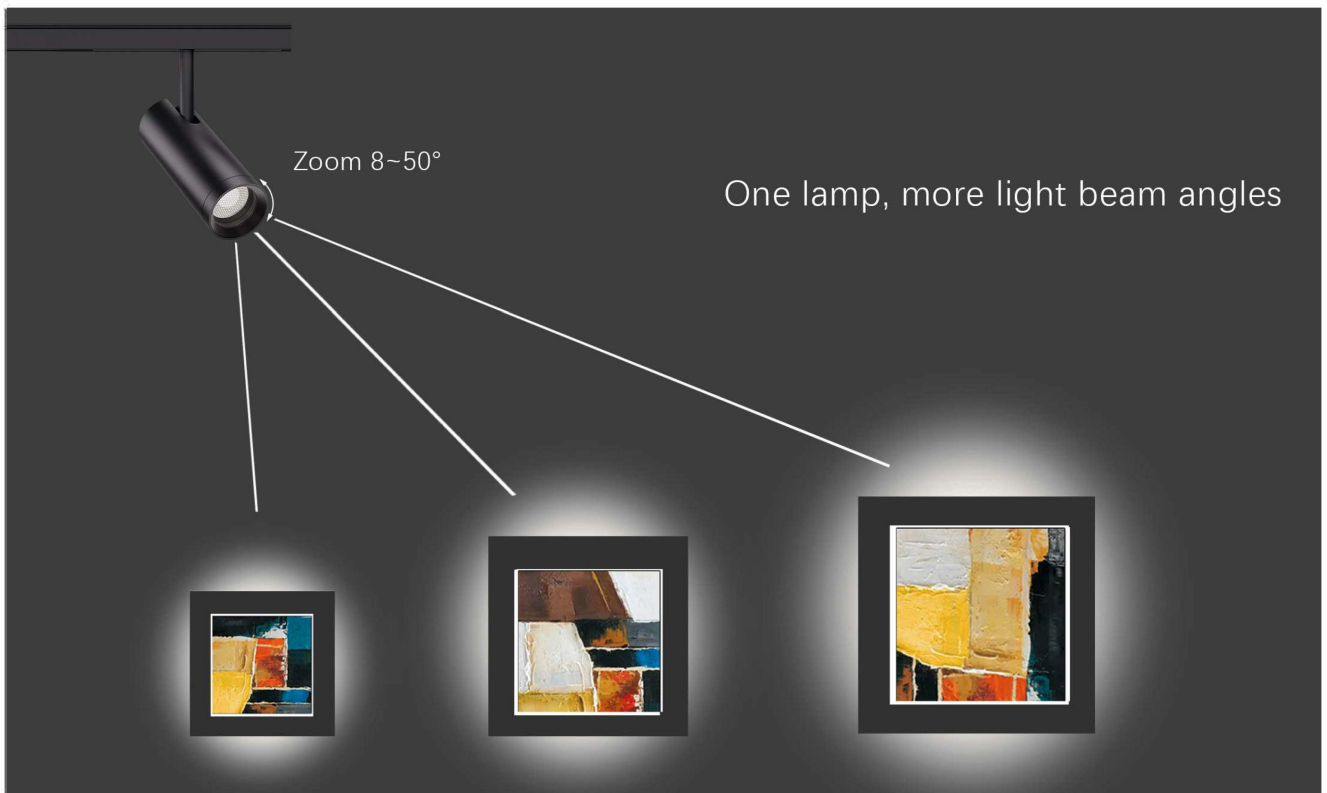


White+Black ring  
+Honeycomb

# 10 Zoomable Light Beam

48V Smart Lighting DALI, Remote Control

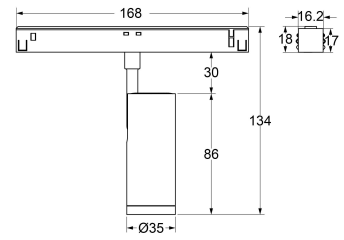




# 1035A Zoomable 5W



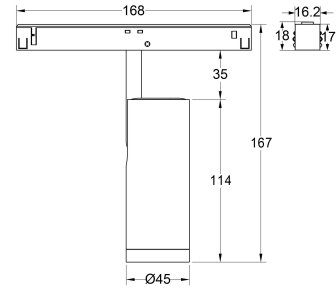




Model No.	Watt	Control	Dimension	Beam angle	Color temp.	CRI	Lumen
1035A (LV26DAB)	5W	DALI Brightness Dim	D35*H86	8~40°	27/30/35/4000K	Ra90	180lm
1035A (LV26DAC)	5W	DALI Tunable White	D35*H86	8~40°	2700~5700K	Ra90	170lm
1035A (LV26RFB)	5W	RF Remote Brightness Dim	D35*H86	8~40°	27/30/35/4000K	Ra90	180lm
1035A (LV26RFC)	5W	RF Remote Tunable White	D35*H86	8~40°	2700~5700K	Ra90	170lm

# 1045A Zoomable 10W





Zoom 8~40°

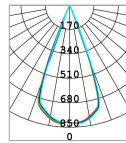
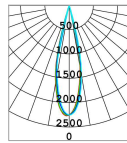
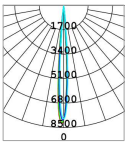


### Light distributions

1045A 10W 4000K Ra90 8D

1045A 10W 4000K Ra90 24D

1045A 10W 4000K Ra90 40D



Flux out: 88.40 lm

Height	Eavg, Emax	Angle: 7.64deg	Diameter
0.5m	23019, 33611 lx		6.68cm
1m	5755, 8403 lx		13.35cm
1.5m	2558, 3735 lx		20.03cm
2m	1439, 2101 lx		26.71cm
2.5m	920, 1344 lx		33.39cm
3m	639, 4, 933. 6 lx		40.06cm
3.5m	469, 8, 685. 9 lx		46.74cm
4m	359, 7, 625. 2 lx		53.42cm
5m	230, 2, 336. 1 lx		66.77cm
6m	159, 9, 233. 4 lx		80.12cm

Flux out: 242.3 lm

Height	Eavg, Emax	Angle: 24.11deg	Diameter
0.5m	6278, 9109 lx		21.36cm
1m	1570, 2277 lx		42.72cm
1.5m	697, 6, 1012 lx		64.08cm
2m	392, 4, 569. 3 lx		85.44cm
2.5m	251, 1, 364. 3 lx		106.80cm
3m	174, 4, 253. 0 lx		128.16cm
3.5m	128, 1, 185. 9 lx		149.51cm
4m	98, 10, 142. 3 lx		170.87cm
5m	62, 78, 91. 09 lx		213.59cm
6m	43, 60, 63. 25 lx		256.31cm

Flux out: 282.9 lm

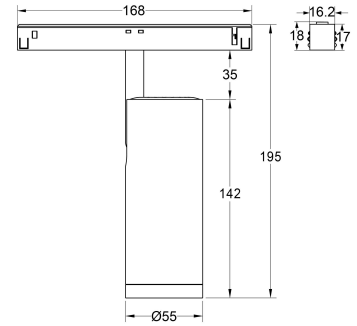
Height	Eavg, Emax	Angle: 40.69deg	Diameter
0.5m	2577, 3301 lx		37.08cm
1m	644, 3, 825. 3 lx		74.16cm
1.5m	286, 3, 366. 8 lx		111.23cm
2m	161, 1, 206. 3 lx		148.31cm
2.5m	103, 1, 132. 0 lx		185.39cm
3m	71, 59, 91. 70 lx		222.47cm
3.5m	52, 59, 67. 37 lx		259.54cm
4m	40, 27, 51. 58 lx		296.62cm
5m	25, 77, 33. 01 lx		370.78cm
6m	17, 90, 22. 92 lx		444.93cm

• For other options or original test report, please contact our sales team.

Model No.	Watt	Control	Dimension	Beam angle	Color temp.	CRI	Lumen
1045A (LV26DAB)	10W	DALI Brightness Dim	D45*H114	8~40°	27/30/35/4000K	Ra90	320lm
1045A (LV26DAC)	10W	DALI Tunable White	D45*H114	8~40°	2700~5700K	Ra90	300lm
1045A (LV26RFB)	10W	RF Remote Brightness Dim	D45*H114	8~40°	27/30/35/4000K	Ra90	320lm
1045A (LV26RFC)	10W	RF Remote Tunable White	D45*H114	8~40°	2700~5700K	Ra90	300lm

# 1055A Zoomable 12W 16W





Zoom 8~50°



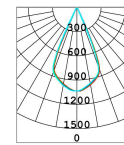
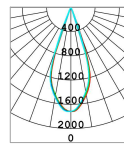
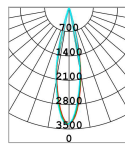
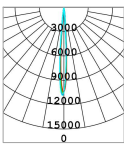
## Light distributions

1055A 12W 4000K Ra90 8D

1055A 12W 4000K Ra90 24D

1055A 12W 4000K Ra90 38D

1055A 12W 4000K Ra90 50D



Flux out: 138.7 lm

Height	Eavg, Emax	Diameter
0.5m	28509, 43467 lx	7.00cm
1m	7127, 10867 lx	14.00cm
1.5m	3168, 4830 lx	21.00cm
2m	1782, 2717 lx	28.01cm
2.5m	1140, 1739 lx	35.01cm
3m	791, 1207 lx	42.01cm
3.5m	581, 887.1 lx	49.01cm
4m	445, 4, 679.2 lx	56.01cm
5m	285, 1, 434.7 lx	70.02cm
6m	198, 0, 301.9 lx	84.02cm

Angle: 8.01deg

Flux out: 302.6 lm

Height	Eavg, Emax	Diameter
0.5m	9309, 13495 lx	20.17cm
1m	2327, 3374 lx	40.33cm
1.5m	1034, 1499 lx	60.50cm
2m	581, 8, 843.4 lx	80.67cm
2.5m	372, 4, 539.8 lx	100.83cm
3m	258, 6, 374.9 lx	121.00cm
3.5m	190, 0, 275.4 lx	141.17cm
4m	146, 4, 210.9 lx	161.33cm
5m	93, 09, 134.9 lx	201.66cm
6m	64, 64, 93.71 lx	242.00cm

Angle: 22.80deg

Flux out: 425.7 lm

Height	Eavg, Emax	Diameter
0.5m	4841, 6880 lx	32.97cm
1m	1210, 1720 lx	65.94cm
1.5m	537, 9, 764.5 lx	98.91cm
2m	302, 6, 430.0 lx	131.89cm
2.5m	193, 6, 275.2 lx	164.86cm
3m	134, 5, 191.1 lx	197.83cm
3.5m	98, 80, 140.4 lx	230.80cm
4m	75, 64, 107.5 lx	263.77cm
5m	48, 41, 68.80 lx	329.71cm
6m	33, 62, 47.78 lx	395.66cm

Angle: 36.50deg

Flux out: 447.7 lm

Height	Eavg, Emax	Diameter
0.5m	3015, 4142 lx	43.28cm
1m	753, 7, 1035 lx	86.57cm
1.5m	335, 0, 460.2 lx	129.86cm
2m	188, 4, 258.8 lx	173.13cm
2.5m	120, 6, 165.7 lx	216.41cm
3m	83, 74, 115.0 lx	259.70cm
3.5m	61, 53, 84.52 lx	302.98cm
4m	47, 11, 64.71 lx	346.26cm
5m	30, 15, 41.42 lx	432.83cm
6m	20, 94, 28.75 lx	519.39cm

Angle: 46.81deg

• For other options or original test report, please contact our sales team.

Model No.	Watt	Control	Dimension	Beam angle	Color temp.	CRI	Lumen
1055A (LV26DAB12)	12W	DALI Brightness Dim	D55*H142	8~50°	27/30/35/4000K	Ra90	520lm
1055A (LV26DAC12)	12W	DALI Tunable White	D55*H142	8~50°	2700~5700K	Ra90	500lm
1055A (LV26RFB12)	12W	RF Remote Brightness Dim	D55*H142	8~50°	27/30/35/4000K	Ra90	520lm
1055A (LV26RFC12)	12W	RF Remote Tunable White	D55*H142	8~50°	2700~5700K	Ra90	500lm
1055A (LV26DAB16)	16W	DALI Brightness Dim	D55*H142	15~50°	2700/3000/4000K	Ra90	870lm
1055A (LV26DAC16)	16W	DALI Tunable White	D55*H142	15~50°	2700~5700K	Ra90	800lm
1055A (LV26RFB16)	16W	RF Remote Brightness Dim	D55*H142	15~50°	2700/3000/4000K	Ra90	870lm
1055A (LV26RFC16)	16W	RF Remote Tunable White	D55*H142	15~50°	2700~5700K	Ra90	800lm

# 11 Fixed Light Beam

## 48V Smart Lighting DALI, Remote Control

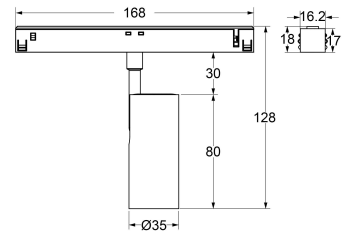




# 1135L Fixed Lens 5W

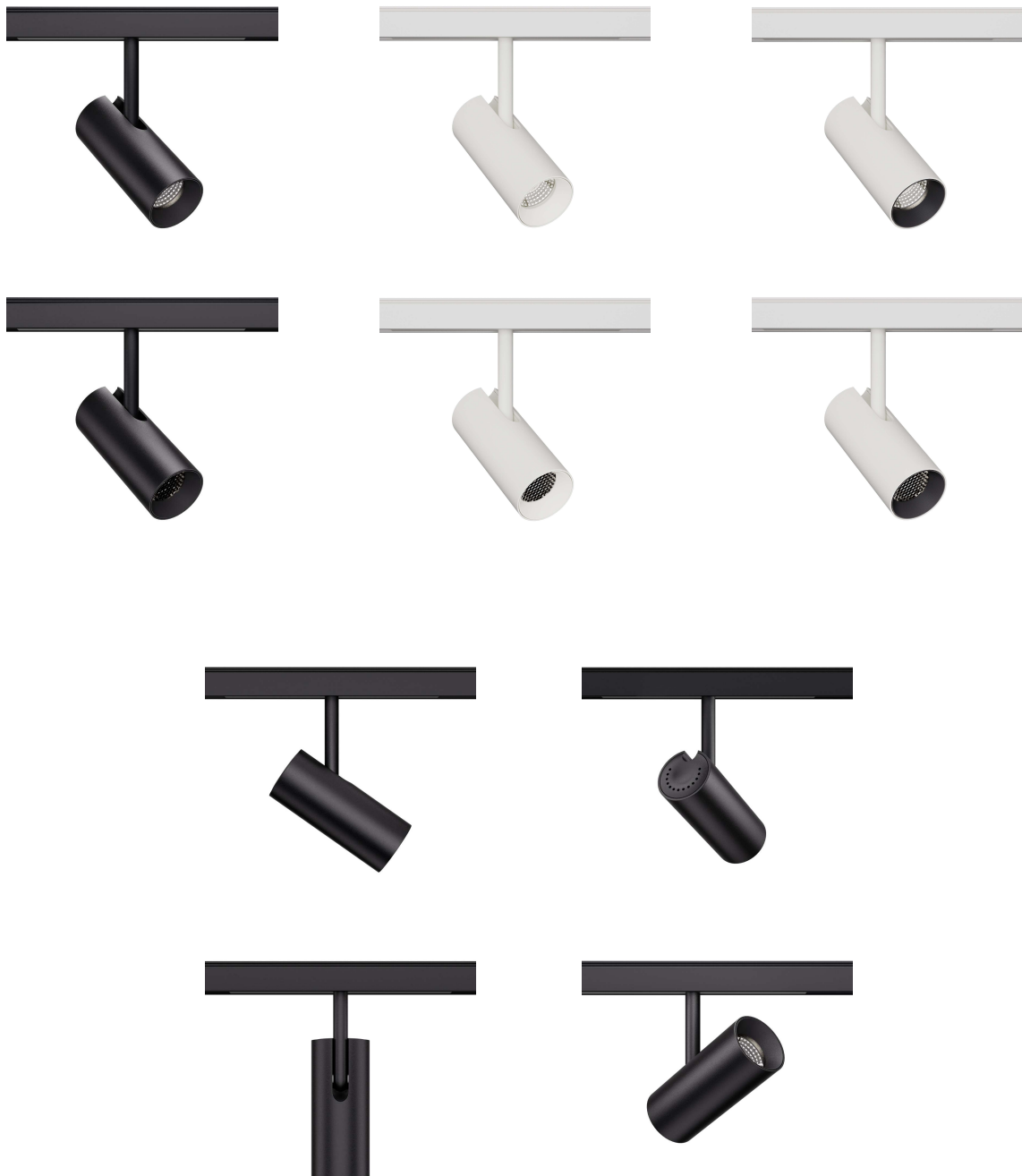


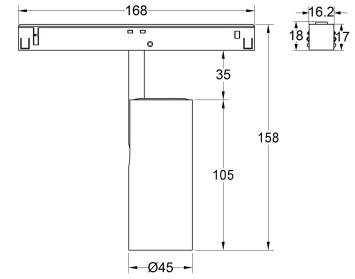




Model No.	Watt	Control	Dimension	Beam angle	Color temp.	CRI	Lumen
1135L (LV26DAB)	5W	DALI Brightness Dim	D35*H80	15°/24°/36°/50°	27/30/35/4000K	Ra90	400lm
1135L (LV26DAC)	5W	DALI Tunable White	D35*H80	15°/24°/36°/50°	2700~5700K	Ra90	360lm
1135L (LV26RFB)	5W	RF Remote Brightness Dim	D35*H80	15°/24°/36°/50°	27/30/35/4000K	Ra90	400lm
1135L (LV26RFC)	5W	RF Remote Tunable White	D35*H80	15°/24°/36°/50°	2700~5700K	Ra90	360lm

# 1145L Fixed Lens 10W





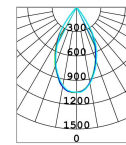
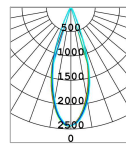
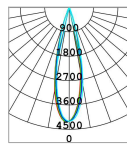
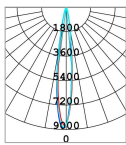
### Light distributions

1145L 10W 4000K Ra90 15D

1145L 10W 4000K Ra90 24D

1145L 10W 4000K Ra90 36D

1145L 10W 4000K Ra90 50D



Flux out: 287.6 lm

Height	Eavg, Emax	Diameter
0.5m	24291, 35787 lx	11.95cm
1m	6073, 8947 lx	23.90cm
1.5m	2699, 3976 lx	35.86cm
2m	1518, 2237 lx	47.81cm
2.5m	971.6, 1431 lx	59.76cm
3m	674.8, 994.1 lx	71.71cm
3.5m	495.7, 730.3 lx	83.66cm
4m	379.5, 559.2 lx	95.62cm
6m	242.9, 357.9 lx	119.52cm
6m	168.7, 248.5 lx	143.42cm

Angle: 13.63deg

Flux out: 459.2 lm

Height	Eavg, Emax	Diameter
0.5m	11897, 17090 lx	21.85cm
1m	2974, 4272 lx	43.71cm
1.5m	1322, 1899 lx	65.56cm
2m	743.5, 1068 lx	87.41cm
2.5m	475.9, 683.6 lx	109.26cm
3m	330.5, 474.7 lx	131.12cm
3.5m	242.8, 348.8 lx	152.97cm
4m	185.9, 267.0 lx	174.82cm
6m	119.0, 170.9 lx	218.53cm
6m	82.62, 119.7 lx	262.23cm

Angle: 24.65deg

Flux out: 509.4 lm

Height	Eavg, Emax	Diameter
0.5m	6524, 9801 lx	30.60cm
1m	1631, 2450 lx	61.20cm
1.5m	724.9, 1089 lx	91.79cm
2m	407.8, 612.6 lx	122.39cm
2.5m	261.0, 392.0 lx	152.99cm
3m	181.2, 272.2 lx	183.59cm
3.5m	133.1, 200.0 lx	214.18cm
4m	101.9, 153.1 lx	244.78cm
6m	65.24, 98.01 lx	305.96cm
6m	45.31, 68.06 lx	367.17cm

Angle: 34.03deg

Flux out: 524.7 lm

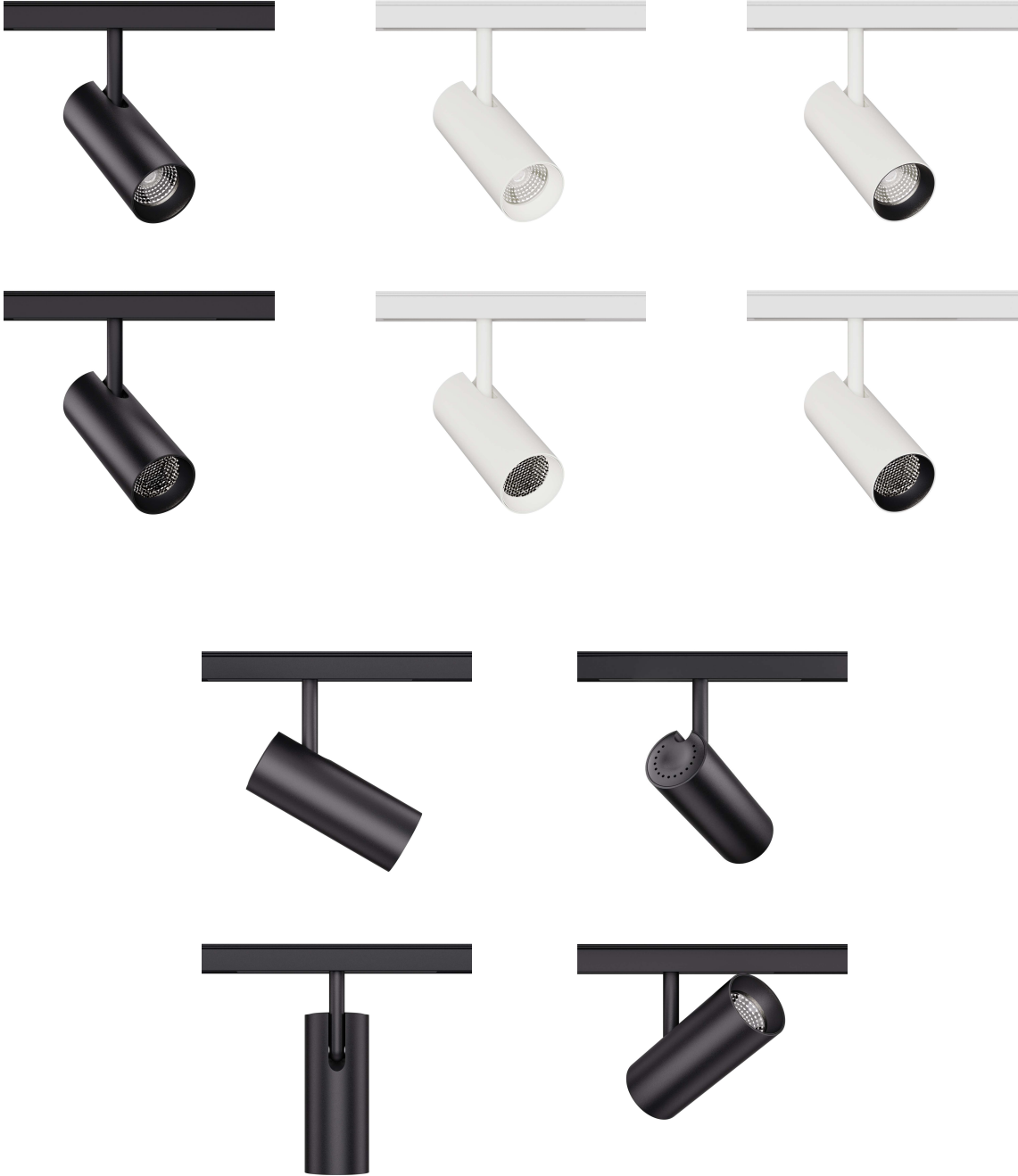
Height	Eavg, Emax	Diameter
0.5m	2573, 4210 lx	50.61cm
1m	643.3, 1053 lx	101.22cm
1.5m	285.9, 467.8 lx	151.83cm
2m	160.8, 263.1 lx	202.44cm
2.5m	102.9, 168.4 lx	253.05cm
3m	71.47, 116.9 lx	303.67cm
3.5m	52.51, 85.92 lx	354.28cm
4m	40.20, 65.78 lx	404.89cm
6m	26.73, 42.10 lx	506.11cm
6m	17.87, 29.24 lx	607.33cm

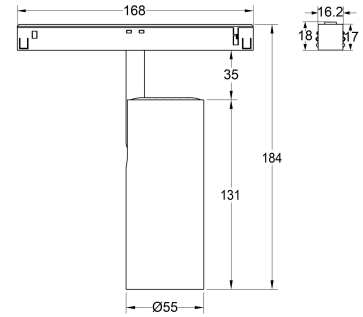
Angle: 53.69deg

• For other options or original test report, please contact our sales team.

Model No.	Watt	Control	Dimension	Beam angle	Color temp.	CRI	Lumen
1145L (LV26DAB)	10W	DALI Brightness Dim	D45*H105	15°/24°/36°/50°	27/30/35/4000K	Ra90	820lm
1145L (LV26DAC)	10W	DALI Tunable White	D45*H105	15°/24°/36°/50°	2700~5700K	Ra90	730lm
1145L (LV26RFB)	10W	RF Remote Brightness Dim	D45*H105	15°/24°/36°/50°	27/30/35/4000K	Ra90	820lm
1145L (LV26RFC)	10W	RF Remote Tunable White	D45*H105	15°/24°/36°/50°	2700~5700K	Ra90	730lm

# 1155L Fixed Lens 12W 16W





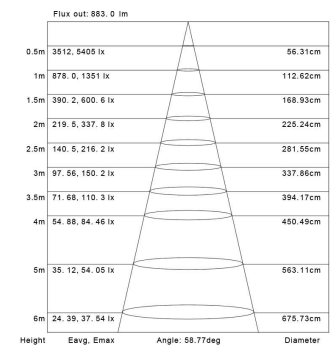
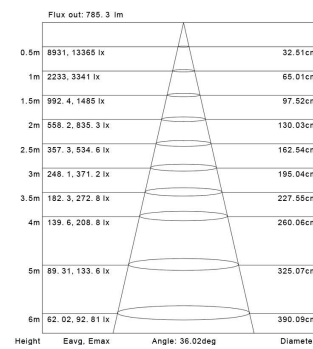
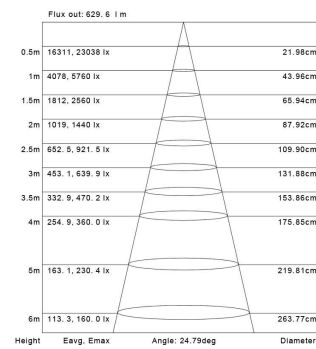
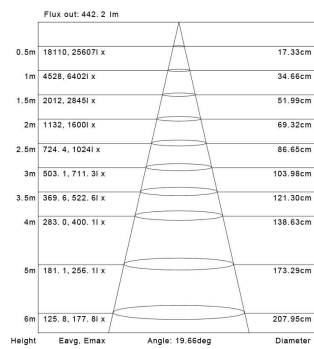
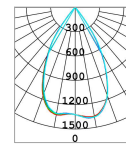
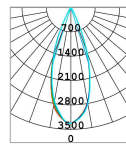
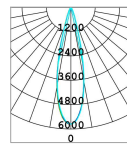
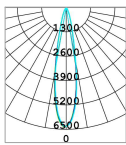
## Light distributions

1155L 12W 4000K Ra90 15D

1155L 12W 4000K Ra90 24D

1155L 12W 4000K Ra90 36D

1155L 12W 4000K Ra90 60D



• For other options or original test report, please contact our sales team.

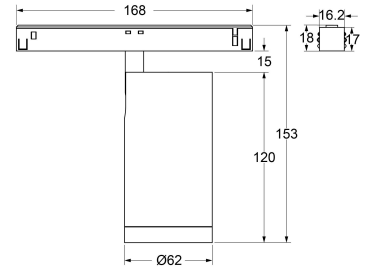
Model No.	Watt	Control	Dimension	Beam angle	Color temp.	CRI	Lumen
1155L (LV26DAB12)	12W	DALI Brightness Dim	D55*H131	15°/24°/36°/60°	27/30/35/4000K	Ra90	1200lm
1155L (LV26DAC12)	12W	DALI Tunable White	D55*H131	15°/24°/36°/60°	2700~5700K	Ra90	1000lm
1155L (LV26RFB12)	12W	RF Remote Brightness Dim	D55*H131	15°/24°/36°/60°	27/30/35/4000K	Ra90	1200lm
1155L (LV26RFC12)	12W	RF Remote Tunable White	D55*H131	15°/24°/36°/60°	2700~5700K	Ra90	1000lm
1155L (LV26DAB16)	16W	DALI Brightness Dim	D55*H131	15°/24°/36°/60°	2700/3000/4000K	Ra90	1600lm
1155L (LV26DAC16)	16W	DALI Tunable White	D55*H131	15°/24°/36°/60°	2700~5700K	Ra90	1300lm
1155L (LV26RFB16)	16W	RF Remote Brightness Dim	D55*H131	15°/24°/36°/60°	2700/3000/4000K	Ra90	1600lm
1155L (LV26RFC16)	16W	RF Remote Tunable White	D55*H131	15°/24°/36°/60°	2700~5700K	Ra90	1300lm

# 2062A Zoomable 12W 15W

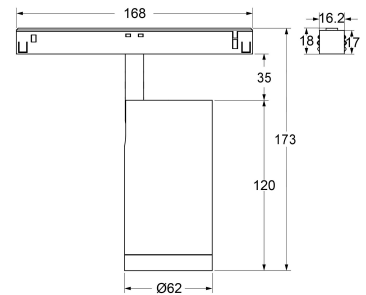




Zoom 11~50°



T1

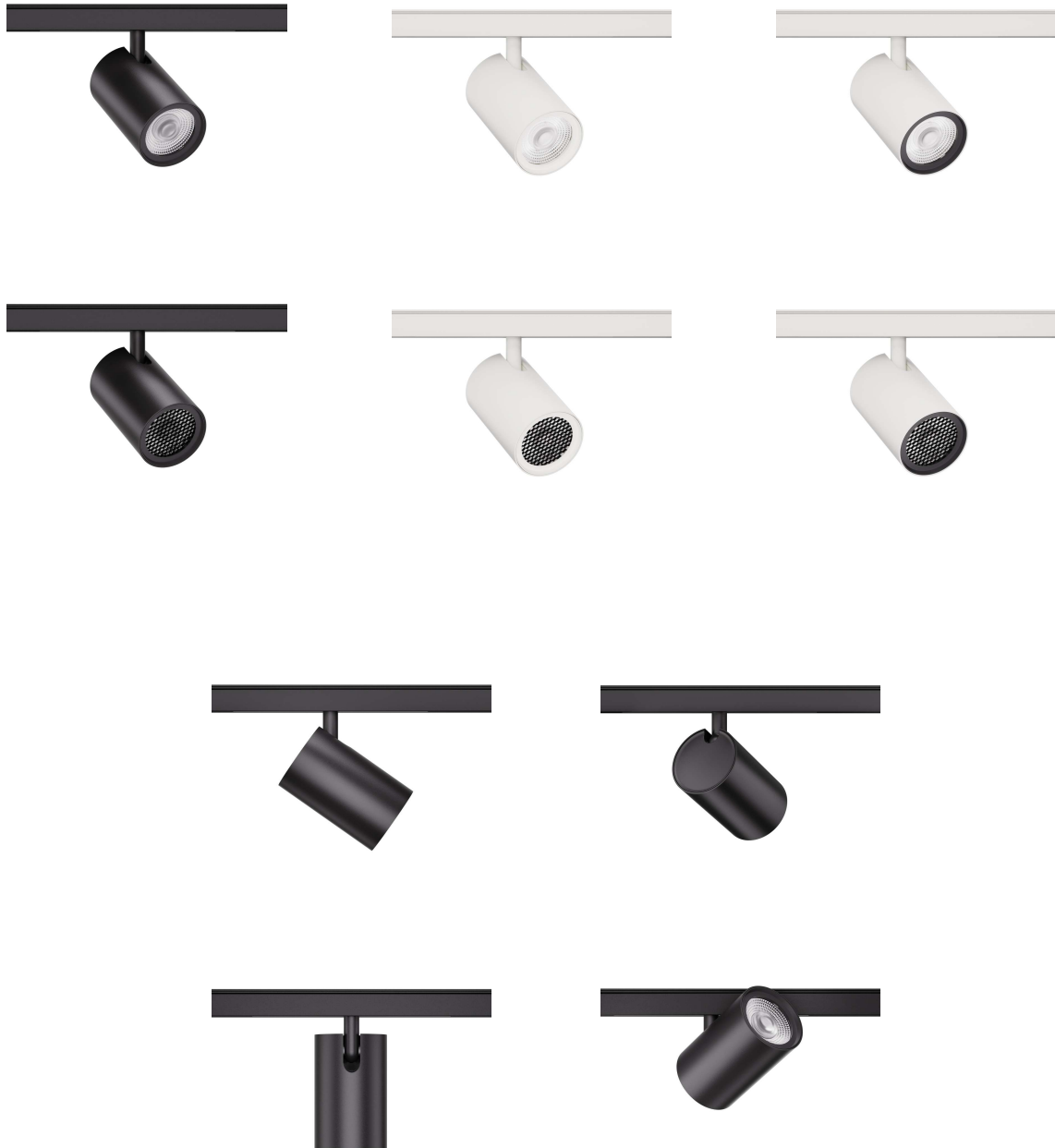


T2

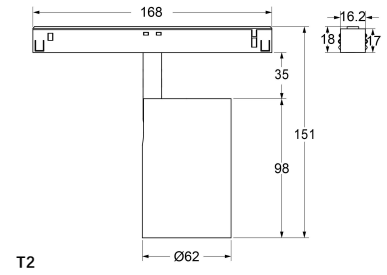
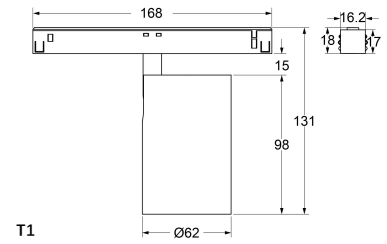


Model No.	Watt	Control	Dimension	Beam angle	Color temp.	CRI	Lumen
2062A (LV26T1/T2DAB12)	12W	DALI Brightness Dim	D62*H120	11~50°	27/30/35/4000K	Ra90	960lm
2062A (LV26T1/T2DAC12)	12W	DALI Tunable White	D62*H120	11~50°	2700~5700K	Ra90	800lm
2062A (LV26T1/T2RFB12)	12W	RF Remote Brightness Dim	D62*H120	11~50°	27/30/35/4000K	Ra90	960lm
2062A (LV26T1/T2RFC12)	12W	RF Remote Tunable White	D62*H120	11~50°	2700~5700K	Ra90	800lm
2062A (LV26T1/T2DAB15)	15W	DALI Brightness Dim	D62*H120	15~50°	2700/3000/4000K	Ra90	1200lm
2062A (LV26T1/T2DAB15)	15W	DALI Tunable White	D62*H120	15~50°	2700~5700K	Ra90	1000lm
2062A (LV26T1/T2DAB15)	15W	RF Remote Brightness Dim	D62*H120	15~50°	2700/3000/4000K	Ra90	1200lm
2062A (LV26T1/T2DAB15)	15W	RF Remote Tunable White	D62*H120	15~50°	2700~5700K	Ra90	1000lm

# 2162L Fixed lens 12W

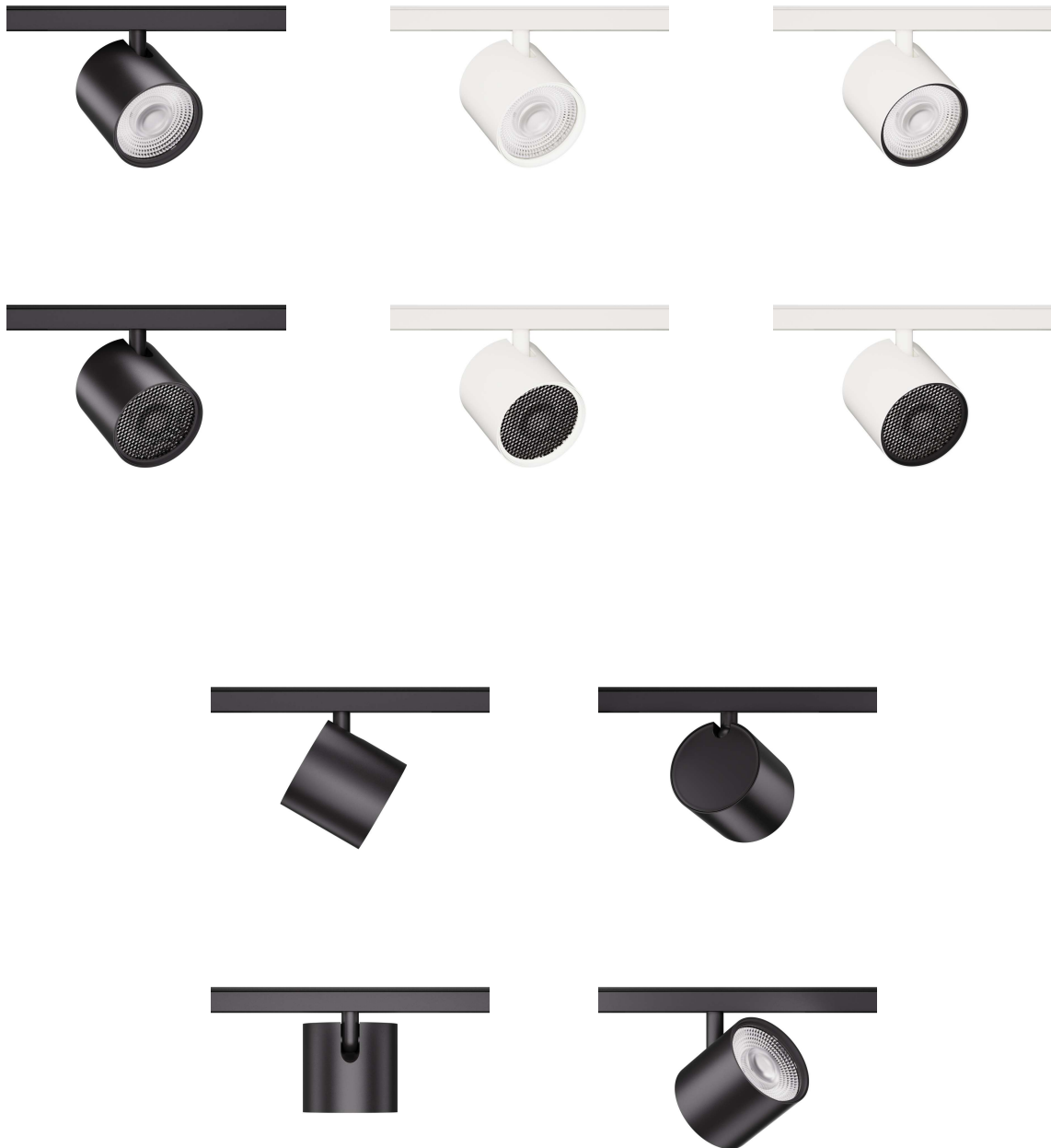


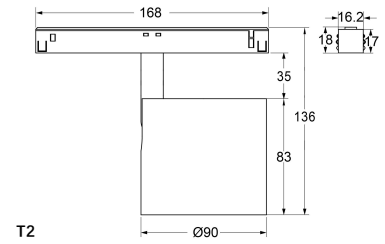
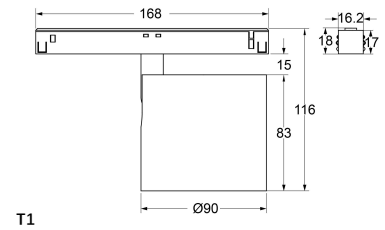




Model No.	Watt	Control	Dimension	Beam angle	Color temp.	CRI	Lumen
2162L (LV26T1DAB)	12W	DALI Brightness Dim	D62*H98	15°/24°/36°/60°	27/30/35/4000K	Ra90	1200lm
2162L (LV26T1DAC)	12W	DALI Tunable White	D62*H98	15°/24°/36°/60°	2700~5700K	Ra90	1000lm
2162L (LV26T1RFB)	12W	RF Remote Brightness Dim	D62*H98	15°/24°/36°/60°	27/30/35/4000K	Ra90	1200lm
2162L (LV26T1RFC)	12W	RF Remote Tunable White	D62*H98	15°/24°/36°/60°	2700~5700K	Ra90	1000lm
2162L (LV26T2DAB)	12W	DALI Brightness Dim	D62*H98	15°/24°/36°/60°	2700/3000/4000K	Ra90	1200lm
2162L (LV26T2DAC)	12W	DALI Tunable White	D62*H98	15°/24°/36°/60°	2700~5700K	Ra90	1000lm
2162L (LV26T2RFB)	12W	RF Remote Brightness Dim	D62*H98	15°/24°/36°/60°	2700/3000/4000K	Ra90	1200lm
2162L (LV26T2RFC)	12W	RF Remote Tunable White	D62*H98	15°/24°/36°/60°	2700~5700K	Ra90	1000lm

# 2190L Fixed lens 20W





Model No.	Watt	Control	Dimension	Beam angle	Color temp.	CRI	Lumen
2190L (LV26T1DAB)	20W	DALI Brightness Dim	D90*H83	15°/24°/36°/60°	27/30/35/4000K	Ra90	2000lm
2190L (LV26T1DAC)	20W	DALI Tunable White	D90*H83	15°/24°/36°/60°	2700~5700K	Ra90	1600lm
2190L (LV26T1RFB)	20W	RF Remote Brightness Dim	D90*H83	15°/24°/36°/60°	27/30/35/4000K	Ra90	2000lm
2190L (LV26T1RFC)	20W	RF Remote Tunable White	D90*H83	15°/24°/36°/60°	2700~5700K	Ra90	1600lm
2190L (LV26T2DAB)	20W	DALI Brightness Dim	D90*H83	15°/24°/36°/60°	2700/3000/4000K	Ra90	2000lm
2190L (LV26T2DAC)	20W	DALI Tunable White	D90*H83	15°/24°/36°/60°	2700~5700K	Ra90	1600lm
2190L (LV26T2RFB)	20W	RF Remote Brightness Dim	D90*H83	15°/24°/36°/60°	2700/3000/4000K	Ra90	2000lm
2190L (LV26T2RFC)	20W	RF Remote Tunable White	D90*H83	15°/24°/36°/60°	2700~5700K	Ra90	1600lm

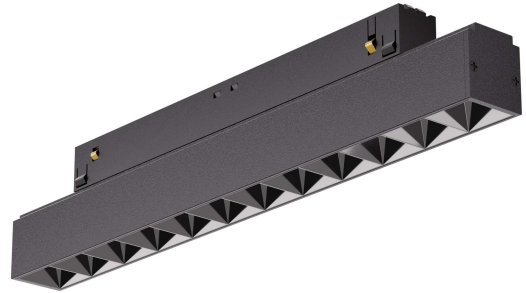
# 48V Linear Light

## 48V Smart Lighting DALI, Remote Control

LL22 Linear Light



LS22 Linear Spot



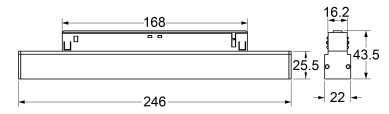
LA22 Adjustable Linear Spot



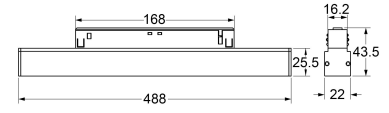


# Linear Light LL22 48V 10W 20W 30W

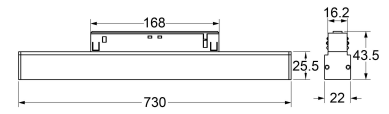




10W



20W



30W

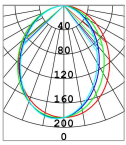


## Light distributions

LL22A 10W 4000K Ra90 90D

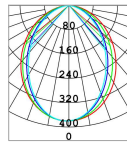
LL22A 20W 4000K Ra90 90D

LL22A 30W 4000K Ra90 90D



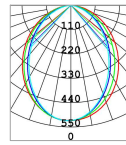
Flux out : 210.0 lm

Height	Eavg, Emax	Angle: 80.34 deg	Diameter
0.5m	366, 6, 750, 4 lx		84.42cm
1m	91, 66, 187, 6 lx		168.85cm
1.5m	40, 74, 83, 37 lx		253.27cm
2m	22, 91, 46, 90 lx		337.70cm
2.5m	14, 67, 30, 01 lx		422.12cm
3m	10, 18, 20, 84 lx		506.54cm
3.5m	7, 482, 15, 31 lx		590.97cm
4m	5, 729, 11, 72 lx		675.39cm
5m	3, 666, 7, 504 lx		844.24cm
6m	2, 546, 5, 211 lx		1013.09cm



Flux out : 424.3 lm

Height	Eavg, Emax	Angle: 79.80 deg	Diameter
0.5m	767, 3, 1536 lx		83.62cm
1m	191, 8, 384, 0 lx		167.24cm
1.5m	85, 26, 170, 6 lx		250.86cm
2m	47, 96, 95, 99 lx		334.48cm
2.5m	30, 69, 61, 43 lx		418.10cm
3m	21, 31, 42, 66 lx		501.72cm
3.5m	15, 66, 31, 34 lx		585.34cm
4m	11, 99, 24, 00 lx		668.96cm
5m	7, 673, 15, 36 lx		836.20cm
6m	5, 329, 10, 67 lx		1003.44cm



Flux out : 622.9 lm

Height	Eavg, Emax	Angle: 82.43 deg	Diameter
0.5m	1013, 2106 lx		87.60cm
1m	253, 3, 526, 6 lx		175.19cm
1.5m	112, 6, 234, 1 lx		262.79cm
2m	63, 32, 131, 7 lx		350.39cm
2.5m	40, 53, 84, 26 lx		437.98cm
3m	28, 14, 58, 51 lx		525.58cm
3.5m	20, 68, 42, 99 lx		613.17cm
4m	15, 83, 32, 91 lx		700.77cm
5m	10, 13, 21, 06 lx		875.96cm
6m	7, 036, 14, 63 lx		1051.16cm

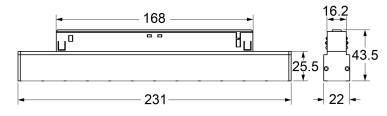
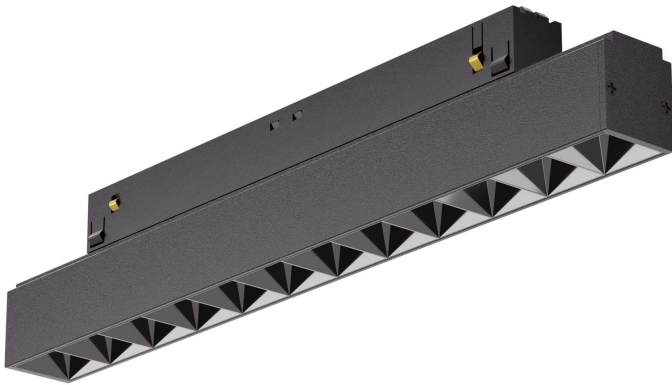
• For other options or original test report, please contact our sales team.

Model No.	Watt	Control	Dimension	Beam angle	Color temp.	CRI	Lumen
ALL-LL22A (LV26DAB)	10W	DALI Brightness Dim	L246*W22*H25.5	90°	27/30/40/50/5700K	Ra90	400lm
ALL-LL22A (LV26RFB)	10W	RF Remote Brightness Dim	L246*W22*H25.5	90°	27/30/40/50/5700K	Ra90	400lm
ALL-LL22B (LV26DAB)	20W	DALI Brightness Dim	L488*W22*H25.5	90°	27/30/40/50/5700K	Ra90	800lm
ALL-LL22B (LV26RFB)	20W	RF Remote Brightness Dim	L488*W22*H25.5	90°	27/30/40/50/5700K	Ra90	800lm
ALL-LL22C (LV26DAB)	30W	DALI Brightness Dim	L730*W22*H25.5	90°	27/30/40/50/5700K	Ra90	1100lm
ALL-LL22C (LV26RFB)	30W	RF Remote Brightness Dim	L730*W22*H25.5	90°	27/30/40/50/5700K	Ra90	1100lm

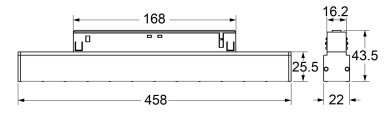
# Linear Spot LS22 48V 10W 20W 30W



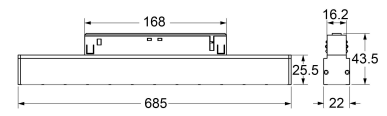




10W



20W



30W

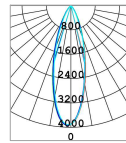
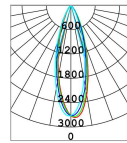
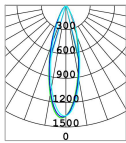


## Light distributions

LS22A 10W 4000K Ra90 30D

LS22A 20W 4000K Ra90 30D

LS22A 30W 4000K Ra90 30D



Flux out : 208.3 lm

Height	Eavg, Emax	Angle: 29.62 deg	Diameter
0.5m	3694, 5560 lx		26.44cm
1m	923.5, 1390 lx		52.89cm
1.5m	410.4, 617.8 lx		79.33cm
2m	230.9, 347.5 lx		105.76cm
2.5m	147.8, 222.4 lx		132.22cm
3m	102.6, 154.4 lx		158.67cm
3.5m	75.38, 113.5 lx		185.11cm
4m	57.72, 86.88 lx		211.55cm
5m	36.94, 55.60 lx		264.44cm
6m	25.65, 38.61 lx		317.33cm

Flux out : 440.8 lm

Height	Eavg, Emax	Angle: 30.18 deg	Diameter
0.5m	7297, 11184 lx		26.97cm
1m	1824, 2796 lx		53.94cm
1.5m	810.8, 1243 lx		80.90cm
2m	456.1, 699.0 lx		107.87cm
2.5m	291.9, 447.3 lx		134.84cm
3m	202.7, 310.7 lx		161.81cm
3.5m	148.9, 228.2 lx		188.77cm
4m	114.0, 174.7 lx		215.74cm
5m	72.97, 111.8 lx		269.68cm
6m	50.68, 77.66 lx		323.61cm

Flux out : 598.6 lm

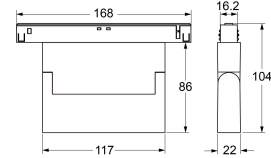
Height	Eavg, Emax	Angle: 29.86 deg	Diameter
0.5m	10615, 15744 lx		26.67cm
1m	2654, 3936 lx		53.34cm
1.5m	1179, 1749 lx		80.01cm
2m	663.4, 984.0 lx		106.67cm
2.5m	424.6, 629.8 lx		133.34cm
3m	294.9, 437.3 lx		160.01cm
3.5m	216.6, 321.3 lx		186.68cm
4m	165.9, 246.0 lx		213.35cm
5m	106.1, 157.4 lx		266.68cm
6m	73.71, 109.3 lx		320.02cm

• For other options or original test report, please contact our sales team.

Model No.	Watt	Control	Dimension	Beam angle	Color temp.	CRI	Lumen
ALL-LS22A (LV26DAB)	10W	DALI Brightness Dim	L231*W22*H25.5	30°	2700/3000/4000K	Ra90	500lm
ALL-LS22A (LV26RFB)	10W	RF Remote Brightness Dim	L231*W22*H25.5	30°	2700/3000/4000K	Ra90	500lm
ALL-LS22B (LV26DAB)	20W	DALI Brightness Dim	L458*W22*H25.5	30°	2700/3000/4000K	Ra90	1000lm
ALL-LS22B (LV26RFB)	20W	RF Remote Brightness Dim	L458*W22*H25.5	30°	2700/3000/4000K	Ra90	1000lm
ALL-LS22C (LV26DAB)	30W	DALI Brightness Dim	L685*W22*H25.5	30°	2700/3000/4000K	Ra90	1400lm
ALL-LS22C (LV26RFB)	30W	RF Remote Brightness Dim	L685*W22*H25.5	30°	2700/3000/4000K	Ra90	1400lm

# Adjustable Spot LA22 48V 6W





6LED

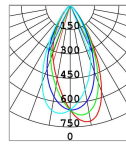
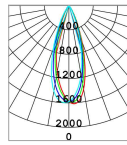
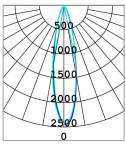


## Light distributions

LA22A 6W 4000K Ra90 20D

LA22A 6W 4000K Ra90 32D

LA22A 6W 4000K Ra90 50D



Flux out : 199.3 lm

Height	Eavg, Emax	Angle: 21.46 deg	Diameter
0.5m	6715, 9800 lx		18.95cm
1m	1679, 2450 lx		37.90cm
1.5m	746, 1, 1089 lx		56.86cm
2m	419, 7, 612, 5 lx		75.81cm
2.5m	268, 6, 392, 0 lx		94.76cm
3m	186, 5, 272, 2 lx		113.71cm
3.5m	137, 0, 200, 0 lx		132.66cm
4m	104, 9, 153, 1 lx		151.62cm
5m	67, 15, 98, 00 lx		189.52cm
6m	48, 63, 68, 06 lx		227.43cm

Flux out : 304.2 lm

Height	Eavg, Emax	Angle: 32.33 deg	Diameter
0.5m	4415, 6493 lx		28.98cm
1m	1104, 1623 lx		57.96cm
1.5m	490, 5, 721, 5 lx		86.95cm
2m	275, 9, 405, 8 lx		115.93cm
2.5m	176, 6, 259, 7 lx		144.91cm
3m	122, 6, 180, 4 lx		173.89cm
3.5m	90, 10, 132, 5 lx		202.87cm
4m	68, 98, 101, 5 lx		231.86cm
5m	44, 15, 64, 93 lx		289.82cm
6m	30, 66, 45, 09 lx		347.78cm

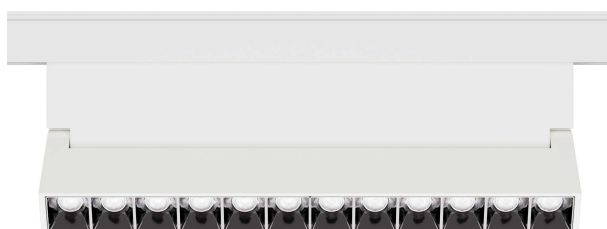
Flux out : 238.3 lm

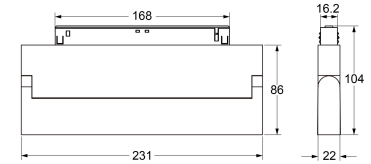
Height	Eavg, Emax	Angle: 43.46 deg	Diameter
0.5m	1858, 2877 lx		39.85cm
1m	464, 6, 719, 31 lx		79.71cm
1.5m	206, 5, 319, 71 lx		119.56cm
2m	116, 1, 179, 81 lx		159.41cm
2.5m	74, 33, 115, 11 lx		199.26cm
3m	51, 62, 79, 92 lx		239.12cm
3.5m	37, 93, 58, 72 lx		278.97cm
4m	29, 04, 44, 96 lx		318.82cm
5m	18, 88, 28, 77 lx		398.63cm
6m	12, 91, 19, 98 lx		478.23cm

• For other options or original test report, please contact our sales team.

Model No.	Watt	Control	Dimension	Beam angle	Color temp.	CRI	Lumen
ALL-LA22A (LV26DAB)	6W	DALI Brightness Dim	L117*W22*H86	20°/32°/50°	2700/3000/4000K	Ra90	500lm
ALL-LA22A (LV26RFB)	6W	RF Remote Brightness Dim	L117*W22*H86	20°/32°/50°	2700/3000/4000K	Ra90	500lm

# Adjustable Spot LA22 48V 12W





12LED

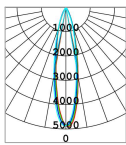


## Light distributions

LA22B12W 4000K Ra90 20D

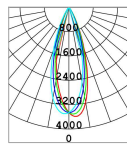
LA22B 12W 4000K Ra90 32D

LA22B 12W 4000K Ra90 50D



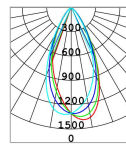
Flux out : 393.3 lm

Height	Eavg, Emax	Angle: 21.15 deg	Diameter
0.5m	13253, 19731 lx		18.67cm
1m	3313, 4933 lx		37.34cm
1.5m	1473, 2192 lx		56.02cm
2m	828, 1, 1233 lx		74.69cm
2.5m	530, 1, 789, 3 lx		93.36cm
3m	368, 1, 548, 1 lx		112.03cm
3.5m	270, 5, 402, 7 lx		130.70cm
4m	207, 1, 308, 3 lx		149.36cm
5m	132, 5, 197, 3 lx		186.72cm
6m	92, 03, 137, 0 lx		224.06cm



Flux out : 628.4 lm

Height	Eavg, Emax	Angle: 31.39 deg	Diameter
0.5m	9731, 14388 lx		28.09cm
1m	2433, 3599 lx		56.19cm
1.5m	1081, 1600 lx		84.28cm
2m	608, 2, 899, 9 lx		112.38cm
2.5m	389, 3, 575, 9 lx		140.47cm
3m	270, 3, 399, 9 lx		168.57cm
3.5m	198, 6, 293, 8 lx		196.66cm
4m	152, 1, 225, 0 lx		224.76cm
5m	97, 31, 144, 0 lx		280.95cm
6m	67, 58, 99, 98 lx		337.14cm



Flux out : 486.5 lm

Height	Eavg, Emax	Angle: 44.94 deg	Diameter
0.5m	3610, 5511 lx		41.36cm
1m	902, 5, 1378 lx		82.72cm
1.5m	401, 1, 612, 3 lx		124.07cm
2m	225, 6, 344, 4 lx		165.43cm
2.5m	144, 4, 220, 4 lx		206.79cm
3m	100, 3, 153, 1 lx		248.15cm
3.5m	73, 68, 112, 5 lx		289.51cm
4m	56, 41, 86, 11 lx		330.86cm
5m	36, 10, 55, 11 lx		413.58cm
6m	25, 07, 38, 27 lx		496.30cm

• For other options or original test report, please contact our sales team.

Model No.	Watt	Control	Dimension	Beam angle	Color temp.	CRI	Lumen
ALL-LA22B (LV26DAB)	12W	DALI Brightness Dim	L231*W22*H86	20°/32°/50°	2700/3000/4000K	Ra90	1000lm
ALL-LA22B (LV26RFB)	12W	RF Remote Brightness Dim	L231*W22*H86	20°/32°/50°	2700/3000/4000K	Ra90	1000lm

# ToL01 Series

## 48V Smart Lighting DALI, Remote Control

ToL01 D30A



ToL01 D40A



ToL01 D40B



ToL01 D50B



ToL01 D55B



ToL01 D40C



ToL01 D90A



ToL01 D100A





Black



Black+Gold ring



Black+Honeycomb



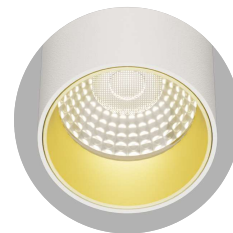
Black+Gold ring  
+Honeycomb



White



White+Black ring



White+Gold ring



White+Honeycomb



White+Black ring  
+Honeycomb

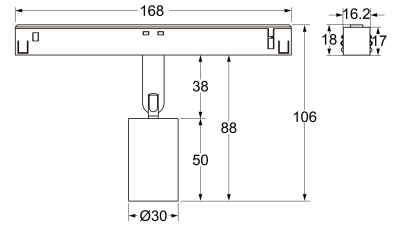


White+Gold ring  
+Honeycomb

# TOL01 D30A 48V 5W







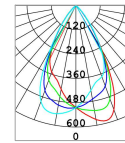
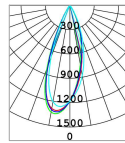
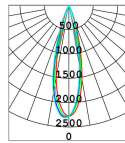
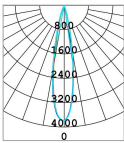
## Light distributions

D30A 5W 4000K Ra90 15D

D30A 5W 4000K Ra90 24D

D30A 5W 4000K Ra90 36D

D30A 5W 4000K Ra90 50D



Flux out : 259.8 lm

Height	Eavg,Emax	Angle: 19.26 deg	Diameter
0.5m	10641, 15386 lx		16.97cm
1m	2660, 3847 lx		33.94cm
1.5m	1182, 1710 lx		50.91cm
2m	665, 981.6 lx		67.88cm
2.5m	425, 6, 615.5 lx		84.85cm
3m	295, 6, 427.4 lx		101.82cm
3.5m	217, 2, 314.0 lx		118.79cm
4m	166, 3, 240.4 lx		135.76cm
5m	106, 4, 153.9 lx		169.70cm
6m	73, 89, 106.8 lx		203.64cm

Flux out : 266.1 lm

Height	Eavg,Emax	Angle: 25.55 deg	Diameter
0.5m	6356, 9266 lx		22.68cm
1m	1589, 2317 lx		45.35cm
1.5m	706, 2, 1030 lx		68.03cm
2m	397, 2, 579.1 lx		90.71cm
2.5m	254, 2, 370.6 lx		113.39cm
3m	176, 5, 257.4 lx		136.06cm
3.5m	129, 7, 189.1 lx		158.74cm
4m	99, 31, 144.8 lx		181.42cm
5m	63, 56, 92.66 lx		226.77cm
6m	44, 14, 64.35 lx		272.12cm

Flux out : 289.0 lm

Height	Eavg,Emax	Angle: 35.17 deg	Diameter
0.5m	3485, 5293 lx		31.69cm
1m	871, 3, 1323 lx		63.38cm
1.5m	387, 2, 588.1 lx		95.07cm
2m	217, 8, 330.8 lx		126.76cm
2.5m	139, 4, 211.7 lx		158.45cm
3m	96, 81, 147.0 lx		190.13cm
3.5m	71, 12, 108.0 lx		221.82cm
4m	54, 45, 82.70 lx		253.51cm
5m	34, 85, 52.93 lx		316.89cm
6m	24, 20, 36.76 lx		380.27cm

Flux out : 308.0 lm

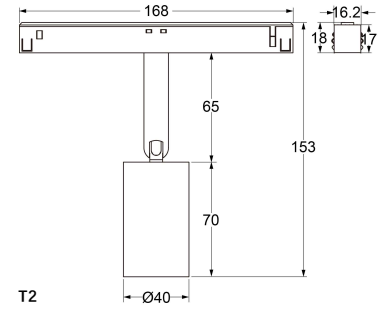
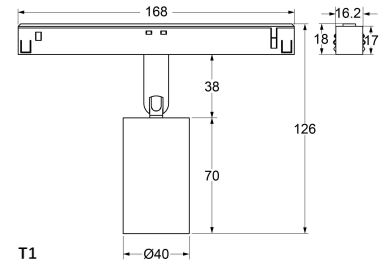
Height	Eavg,Emax	Angle: 54.70 deg	Diameter
0.5m	1447, 2255 lx		51.72cm
1m	361, 7, 563.7 lx		103.45cm
1.5m	160, 8, 250.5 lx		155.17cm
2m	90, 44, 140.9 lx		206.89cm
2.5m	57, 88, 90.19 lx		258.62cm
3m	40, 19, 62.63 lx		310.34cm
3.5m	29, 53, 46.02 lx		362.06cm
4m	22, 61, 35.23 lx		413.79cm
5m	14, 47, 22.55 lx		517.23cm
6m	10, 05, 15.66 lx		620.68cm

• For other options or original test report, please contact our sales team.

Model No.	Watt	Control	Dimension	Beam angle	Color temp.	CRI	Lumen
ALL-ToL0130A (LV26T1DAB)	5W	DALI Brightness Dim	D30*H50	15°/24°/36°/50°	2700/3000/4000K	Ra90	400lm
ALL-ToL0130A (LV26T1DAC)	5W	DALI Tunable White	D30*H50	15°/24°/36°/50°	2700~5700K	Ra90	360lm
ALL-ToL0130A (LV26T1RFB)	5W	RF Remote Brightness Dim	D30*H50	15°/24°/36°/50°	2700/3000/4000K	Ra90	400lm
ALL-ToL0130A (LV26T1RFC)	5W	RF Remote Tunable White	D30*H50	15°/24°/36°/50°	2700~5700K	Ra90	360lm

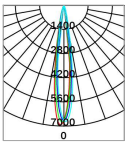
# TOL01 D40A 48V 8W





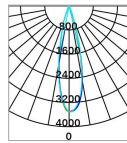
## Light distributions

D40A 8W 4000K Ra90 15D



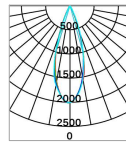
Height	Eavg	Emax	Angle: 13.99deg	Diameter
0.5m	19361.27828 lx			12.27cm
1m	4840.6957 lx			24.54cm
1.5m	2151.3992 lx			36.81cm
2m	1210.1739 lx			49.08cm
2.5m	774.41113 lx			61.35cm
3m	537.87730 lx			73.62cm
3.5m	395.15679 lx			85.90cm
4m	302.54348 lx			98.17cm
5m	193.62783 lx			122.71cm
6m	134.51932 lx			147.25cm

D40A 8W 4000K Ra90 24D



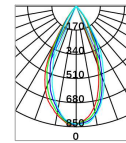
Height	Eavg	Emax	Angle: 23.79deg	Diameter
0.5m	9954.14128 lx			21.07cm
1m	2489.3532 lx			42.13cm
1.5m	1106.1570 lx			63.20cm
2m	622.18830 lx			84.27cm
2.5m	398.25651 lx			105.34cm
3m	276.53924 lx			126.40cm
3.5m	203.12883 lx			147.47cm
4m	155.52207 lx			168.54cm
5m	99.541413 lx			210.67cm
6m	69.139811 lx			252.81cm

D40A 8W 4000K Ra90 36D



Height	Eavg	Emax	Angle: 32.44deg	Diameter
0.5m	5508.80991 lx			29.09cm
1m	1377.20251 lx			58.17cm
1.5m	612.08991 lx			87.26cm
2m	344.35062 lx			116.34cm
2.5m	220.33240 lx			145.43cm
3m	153.02250 lx			174.52cm
3.5m	112.41653 lx			203.60cm
4m	86.071265 lx			232.69cm
5m	55.088099 lx			290.86cm
6m	38.255624 lx			349.03cm

D40A 8W 4000K Ra90 50D



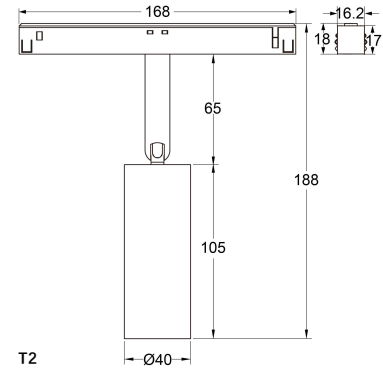
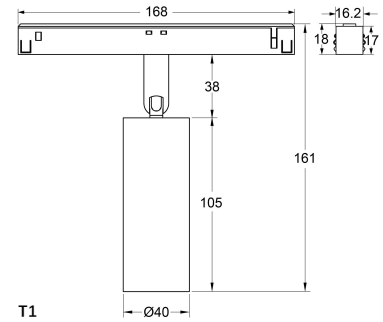
Height	Eavg	Emax	Angle: 48.39deg	Diameter
0.5m	2116.33931 lx			44.93cm
1m	528.98483 lx			89.86cm
1.5m	235.13770 lx			134.79cm
2m	132.22121 lx			179.72cm
2.5m	84.621357 lx			224.65cm
3m	58.779425 lx			269.58cm
3.5m	43.186925 lx			314.51cm
4m	33.065302 lx			359.44cm
5m	21.163393 lx			449.30cm
6m	14.092356 lx			539.16cm

• For other options or original test report, please contact our sales team.

Model No.	Watt	Control	Dimension	Beam angle	Color temp.	CRI	Lumen
ALL-ToL0140A (LV26T1DAB)	8W	DALI Brightness Dim	D40*H70	15°/24°/36°/50°	2700/3000/4000K	Ra90	630lm
ALL-ToL0140A (LV26T1DAC)	8W	DALI Tunable White	D40*H70	15°/24°/36°/50°	2700~5700K	Ra90	560lm
ALL-ToL0140A (LV26T1RFB)	8W	RF Remote Brightness Dim	D40*H70	15°/24°/36°/50°	2700/3000/4000K	Ra90	630lm
ALL-ToL0140A (LV26T1RFC)	8W	RF Remote Tunable White	D40*H70	15°/24°/36°/50°	2700~5700K	Ra90	560lm
ALL-ToL0140A (LV26T2DAB)	8W	DALI Brightness Dim	D40*H70	15°/24°/36°/50°	2700/3000/4000K	Ra90	630lm
ALL-ToL0140A (LV26T2DAC)	8W	DALI Tunable White	D40*H70	15°/24°/36°/50°	2700~5700K	Ra90	560lm
ALL-ToL0140A (LV26T2RFB)	8W	RF Remote Brightness Dim	D40*H70	15°/24°/36°/50°	2700/3000/4000K	Ra90	630lm
ALL-ToL0140A (LV26T2RFC)	8W	RF Remote Tunable White	D40*H70	15°/24°/36°/50°	2700~5700K	Ra90	560lm

# TOL01 D40B 48V 10W





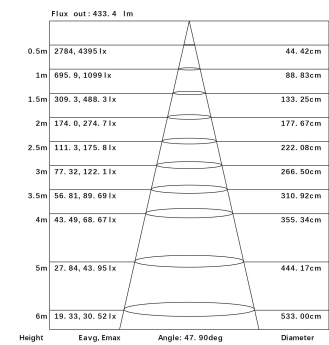
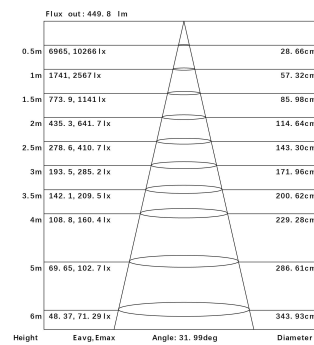
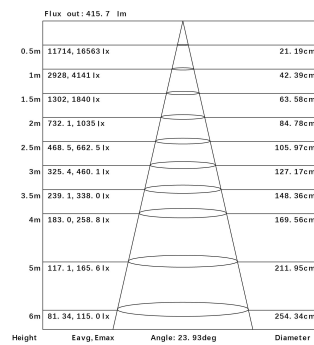
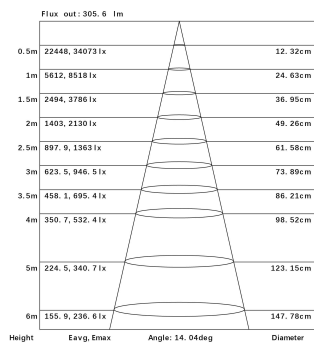
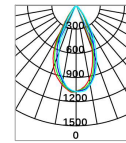
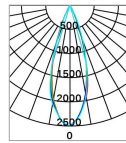
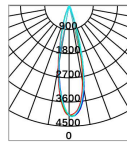
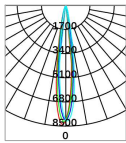
## Light distributions

D40B 10W 4000K Ra90 15D

D40B 10W 4000K Ra90 24D

D40B 10W 4000K Ra90 36D

D40B 10W 4000K Ra90 50D

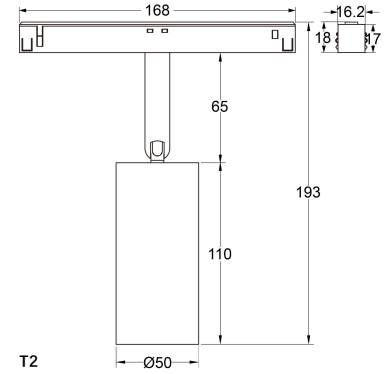
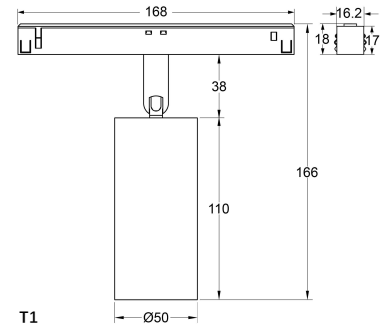


• For other options or original test report, please contact our sales team.

Model No.	Watt	Control	Dimension	Beam angle	Color temp.	CRI	Lumen
ALL-ToL0140B (LV26T1DAB)	10W	DALI Brightness Dim	D40*H105	15°/24°/36°/50°	2700/3000/4000K	Ra90	780lm
ALL-ToL0140B (LV26T1DAC)	10W	DALI Tunable White	D40*H105	15°/24°/36°/50°	2700~5700K	Ra90	700lm
ALL-ToL0140B (LV26T1RFB)	10W	RF Remote Brightness Dim	D40*H105	15°/24°/36°/50°	2700/3000/4000K	Ra90	780lm
ALL-ToL0140B (LV26T1RFC)	10W	RF Remote Tunable White	D40*H105	15°/24°/36°/50°	2700~5700K	Ra90	700lm
ALL-ToL0140B (LV26T2DAB)	10W	DALI Brightness Dim	D40*H105	15°/24°/36°/50°	2700/3000/4000K	Ra90	780lm
ALL-ToL0140B (LV26T2DAC)	10W	DALI Tunable White	D40*H105	15°/24°/36°/50°	2700~5700K	Ra90	700lm
ALL-ToL0140B (LV26T2RFB)	10W	RF Remote Brightness Dim	D40*H105	15°/24°/36°/50°	2700/3000/4000K	Ra90	780lm
ALL-ToL0140B (LV26T2RFC)	10W	RF Remote Tunable White	D40*H105	15°/24°/36°/50°	2700~5700K	Ra90	700lm

# TOL01 D50B 48V 12W





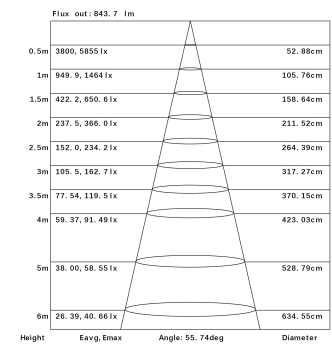
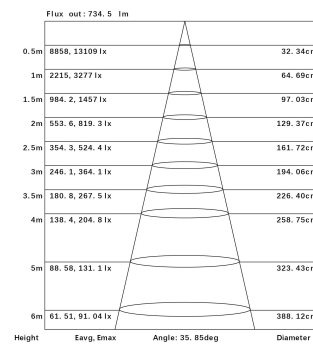
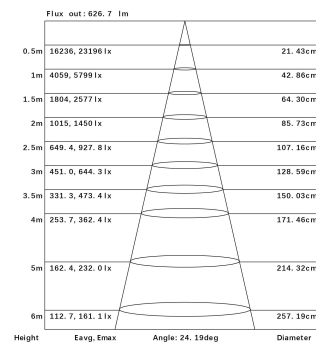
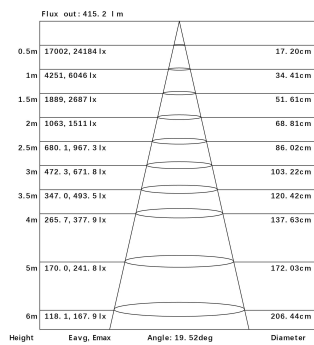
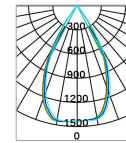
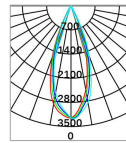
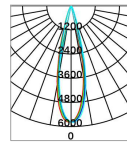
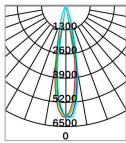
## Light distributions

D50B 12W 4000K Ra90 15D

D50B 12W 4000K Ra90 24D

D50B 12W 4000K Ra90 36D

D50B 12W 4000K Ra90 50D



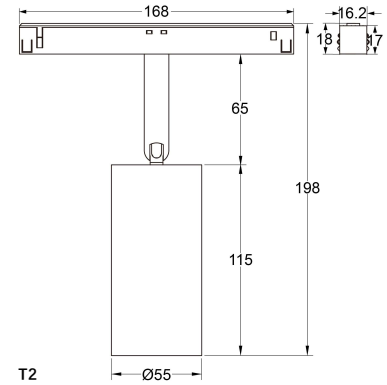
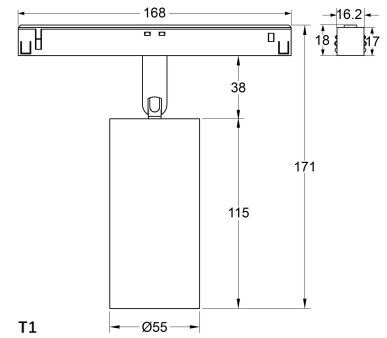
• For other options or original test report, please contact our sales team.

Model No.	Watt	Control	Dimension	Beam angle	Color temp.	CRI	Lumen
ALL-ToL0150B (LV26T1DAB)	12W	DALI Brightness Dim	D50*H110	15°/24°/36°/50°	2700/3000/4000K	Ra90	1000lm
ALL-ToL0150B (LV26T1DAC)	12W	DALI Tunable White	D50*H110	15°/24°/36°/50°	2700~5700K	Ra90	850lm
ALL-ToL0150B (LV26T1RFB)	12W	RF Remote Brightness Dim	D50*H110	15°/24°/36°/50°	2700/3000/4000K	Ra90	1000lm
ALL-ToL0150B (LV26T1RFC)	12W	RF Remote Tunable White	D50*H110	15°/24°/36°/50°	2700~5700K	Ra90	850lm
ALL-ToL0150B (LV26T2DAB)	12W	DALI Brightness Dim	D50*H110	15°/24°/36°/50°	2700/3000/4000K	Ra90	1000lm
ALL-ToL0150B (LV26T2DAC)	12W	DALI Tunable White	D50*H110	15°/24°/36°/50°	2700~5700K	Ra90	850lm
ALL-ToL0150B (LV26T2RFB)	12W	RF Remote Brightness Dim	D50*H110	15°/24°/36°/50°	2700/3000/4000K	Ra90	1000lm
ALL-ToL0150B (LV26T2RFC)	12W	RF Remote Tunable White	D50*H110	15°/24°/36°/50°	2700~5700K	Ra90	850lm

# TOL01 D55B 48V 15W







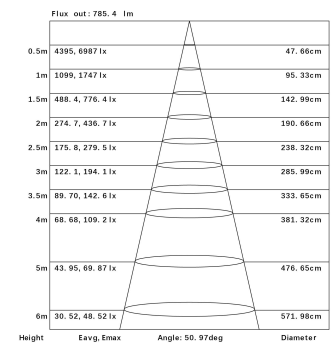
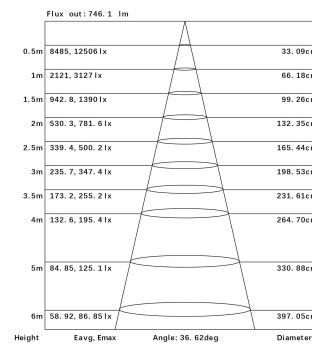
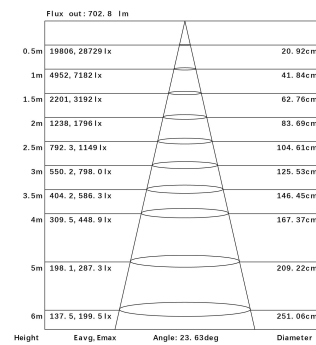
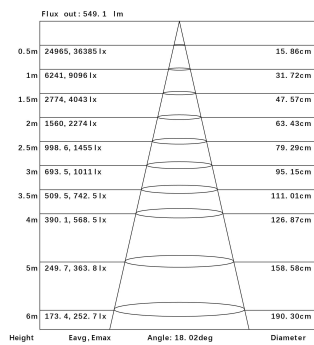
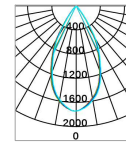
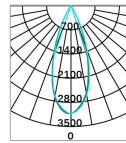
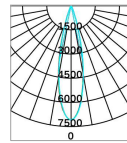
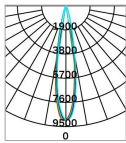
## Light distributions

D55B 15W 4000K Ra90 15D

D55B 15W 4000K Ra90 24D

D55B 15W 4000K Ra90 36D

D55B 15W 4000K Ra90 50D

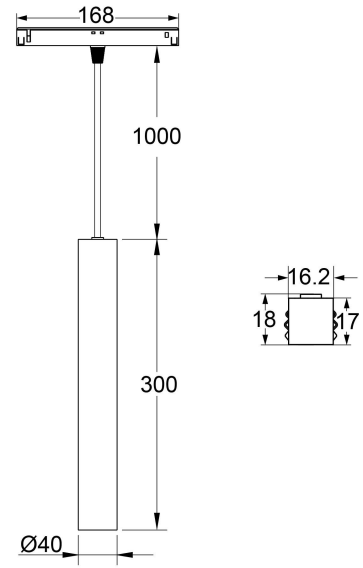


• For other options or original test report, please contact our sales team.

Model No.	Watt	Control	Dimension	Beam angle	Color temp.	CRI	Lumen
ALL-ToL0155B (LV26T1DAB)	15W	DALI Brightness Dim	D55*H115	15°/24°/36°/50°	2700/3000/4000K	Ra90	1200lm
ALL-ToL0155B (LV26T1DAC)	15W	DALI Tunable White	D55*H115	15°/24°/36°/50°	2700~5700K	Ra90	1050lm
ALL-ToL0155B (LV26T1RFB)	15W	RF Remote Brightness Dim	D55*H115	15°/24°/36°/50°	2700/3000/4000K	Ra90	1200lm
ALL-ToL0155B (LV26T1RFC)	15W	RF Remote Tunable White	D55*H115	15°/24°/36°/50°	2700~5700K	Ra90	1050lm
ALL-ToL0155B (LV26T2DAB)	15W	DALI Brightness Dim	D55*H115	15°/24°/36°/50°	2700/3000/4000K	Ra90	1200lm
ALL-ToL0155B (LV26T2DAC)	15W	DALI Tunable White	D55*H115	15°/24°/36°/50°	2700~5700K	Ra90	1050lm
ALL-ToL0155B (LV26T2RFB)	15W	RF Remote Brightness Dim	D55*H115	15°/24°/36°/50°	2700/3000/4000K	Ra90	1200lm
ALL-ToL0155B (LV26T2RFC)	15W	RF Remote Tunable White	D55*H115	15°/24°/36°/50°	2700~5700K	Ra90	1050lm

# TOL01 D40C 48V 10W





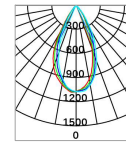
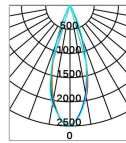
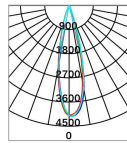
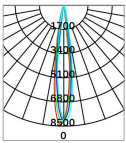
## Light distributions

D40C 10W 4000K Ra90 15D

D40C 10W 4000K Ra90 24D

D40C 10W 4000K Ra90 36D

D40C 10W 4000K Ra90 50D



Flux out: 305.6 lm

Height	Eavg, Emax	Angle: 14.04deg	Diameter
0.5m	22448, 34073 lx		12.32cm
1m	5612, 8518 lx		24.63cm
1.5m	2494, 3786 lx		36.95cm
2m	1403, 2130 lx		49.26cm
2.5m	897.9, 1363 lx		61.58cm
3m	623.5, 946.5 lx		73.89cm
3.5m	458.1, 695.4 lx		86.21cm
4m	350.7, 532.4 lx		98.52cm
5m	224.5, 340.7 lx		123.15cm
6m	155.9, 236.6 lx		147.78cm

Flux out: 415.7 lm

Height	Eavg, Emax	Angle: 23.93deg	Diameter
0.5m	11714, 16563 lx		21.39cm
1m	2928, 4141 lx		42.39cm
1.5m	1302, 1840 lx		63.58cm
2m	732.1, 1035 lx		84.78cm
2.5m	468.5, 662.5 lx		105.97cm
3m	325.4, 460.1 lx		127.17cm
3.5m	239.1, 338.0 lx		148.36cm
4m	183.0, 258.8 lx		169.56cm
5m	117.1, 165.6 lx		211.95cm
6m	81.34, 115.0 lx		254.34cm

Flux out: 449.8 lm

Height	Eavg, Emax	Angle: 31.99deg	Diameter
0.5m	6985, 10266 lx		28.66cm
1m	1741, 2567 lx		57.32cm
1.5m	773.9, 1141 lx		85.98cm
2m	435.3, 641.7 lx		114.64cm
2.5m	278.6, 410.7 lx		143.30cm
3m	193.5, 285.2 lx		171.96cm
3.5m	142.1, 209.5 lx		200.62cm
4m	108.8, 160.4 lx		229.28cm
5m	69.65, 102.7 lx		286.61cm
6m	48.37, 71.29 lx		343.93cm

Flux out: 433.4 lm

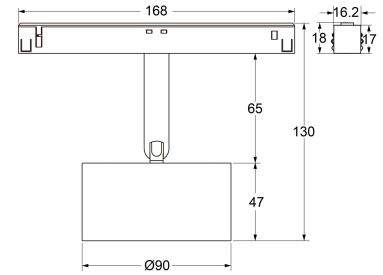
Height	Eavg, Emax	Angle: 47.90deg	Diameter
0.5m	2784, 4395 lx		44.42cm
1m	695.9, 1099 lx		88.83cm
1.5m	309.3, 488.3 lx		133.25cm
2m	174.0, 274.7 lx		177.67cm
2.5m	111.3, 175.8 lx		222.08cm
3m	77.32, 122.1 lx		266.50cm
3.5m	56.81, 89.69 lx		310.92cm
4m	43.49, 68.67 lx		355.34cm
5m	27.84, 43.95 lx		444.17cm
6m	19.33, 30.52 lx		533.00cm

• For other options or original test report, please contact our sales team.

Model No.	Watt	Control	Dimension	Beam angle	Color temp.	CRI	Lumen
ALL-ToL0140C (LV26DAB)	10W	DALI Brightness Dim	D40*H300	15°/24°/36°/50°	2700/3000/4000K	Ra90	780lm
ALL-ToL0140C (LV26DAC)	10W	DALI Tunable White	D40*H300	15°/24°/36°/50°	2700~5700K	Ra90	700lm
ALL-ToL0140C (LV26RFB)	10W	RF Remote Brightness Dim	D40*H300	15°/24°/36°/50°	2700/3000/4000K	Ra90	780lm
ALL-ToL0140C (LV26RFC)	10W	RF Remote Tunable White	D40*H300	15°/24°/36°/50°	2700~5700K	Ra90	700lm

# TOL01 D90A 48V 20W





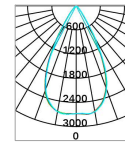
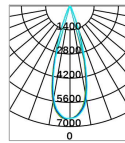
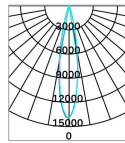
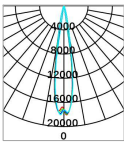
## Light distributions

D90A 20W 4000K Ra90 15D

D90A 20W 4000K Ra90 20D

D90A 20W 4000K Ra90 36D

D90A 20W 4000K Ra90 60D



Flux out: 937.6 lm

Height	Eavg, Emax	Angle: 16.34deg	Diameter
0.5m	53446, 72493 lx		14.36cm
1m	13361, 18123 lx		28.72cm
1.5m	5938, 8055 lx		43.08cm
2m	3340, 4531 lx		57.43cm
2.5m	2138, 2900 lx		71.79cm
3m	1485, 2014 lx		86.15cm
3.5m	1091, 1479 lx		100.51cm
4m	835, 1, 1133 lx		114.87cm
5m	534, 5, 724.9 lx		143.58cm
6m	371, 2, 503.4 lx		172.30cm

Flux out: 841.5 lm

Height	Eavg, Emax	Angle: 18.37deg	Diameter
0.5m	38259, 56363 lx		16.17cm
1m	9565, 14091 lx		32.34cm
1.5m	4251, 6263 lx		48.51cm
2m	2391, 3523 lx		64.69cm
2.5m	1530, 2255 lx		80.86cm
3m	1063, 1566 lx		97.03cm
3.5m	780, 8, 1150 lx		113.20cm
4m	597, 8, 880.7 lx		129.37cm
5m	382, 6, 563.6 lx		161.72cm
6m	265, 7, 391.4 lx		194.06cm

Flux out: 1145 lm

Height	Eavg, Emax	Angle: 30.47deg	Diameter
0.5m	18952, 26247 lx		27.24cm
1m	4738, 6562 lx		54.48cm
1.5m	2106, 2916 lx		81.72cm
2m	1185, 1640 lx		108.96cm
2.5m	758, 1, 1050 lx		136.20cm
3m	526, 5, 729.1 lx		163.44cm
3.5m	386, 8, 535.6 lx		190.68cm
4m	296, 1, 410.1 lx		217.92cm
5m	189, 5, 262.5 lx		272.40cm
6m	131, 6, 182.3 lx		326.87cm

Flux out: 1539 lm

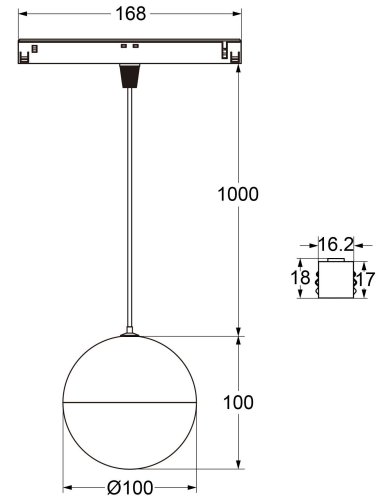
Height	Eavg, Emax	Angle: 54.27deg	Diameter
0.5m	7231, 10796 lx		51.25cm
1m	1808, 2699 lx		102.50cm
1.5m	803, 4, 1200 lx		153.75cm
2m	451, 9, 674.7 lx		204.99cm
2.5m	289, 2, 431.8 lx		256.24cm
3m	200, 9, 299.9 lx		307.49cm
3.5m	147, 6, 220.3 lx		358.74cm
4m	113, 0, 168.7 lx		409.99cm
5m	72, 31, 108.0 lx		512.49cm
6m	50, 21, 74.9 lx		614.98cm

• For other options or original test report, please contact our sales team.

Model No.	Watt	Control	Dimension	Beam angle	Color temp.	CRI	Lumen
ALL-ToL0190A (LV26T2DAB)	20W	DALI Brightness Dim	D90*H47	15°/20°/36°/60°	2700/3000/4000K	Ra90	1800lm
ALL-ToL0190A (LV26T2DAC)	20W	DALI Tunable White	D90*H47	15°/20°/36°/60°	2700~5700K	Ra90	1600lm
ALL-ToL0190A (LV26T2RFB)	20W	RF Remote Brightness Dim	D90*H47	15°/20°/36°/60°	2700/3000/4000K	Ra90	1800lm
ALL-ToL0190A (LV26T2RFC)	20W	RF Remote Tunable White	D90*H47	15°/20°/36°/60°	2700~5700K	Ra90	1600lm

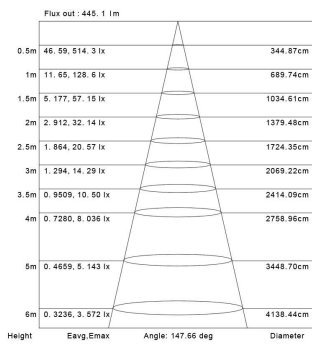
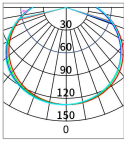
# TOL01 D100A 48V 6W





## Light distributions

D100A 6W 4000K Ra90 150D






• For other options or original test report, please contact our sales team.

Model No.	Watt	Control	Dimension	Beam angle	Color temp.	CRI	Lumen
ALL-ToL01100A (LV26DAB)	6W	DALI Brightness Dim	D100	150°	27/30/40/50/5700K	Ra90	500lm
ALL-ToL01100A (LV26RFB)	6W	RF Remote Brightness Dim	D100	150°	27/30/40/50/5700K	Ra90	500lm











# Control System

## DALI System Control Gear

Picture	Modle No.	Features	Description
	ERI D101A	<b>DALI Dimmer+Bus Power</b> Built-in 100mA DALI bus power. Tunable White+ Brightness Dimming	DALI Dimmer+Bus Power - built-in 100mA DALI bus power under AC mains. - on/off, brightness dimmable and tunable white control. - standard size design. - can be powered by DALI bus while not connected with AC mains.
	ERI D102A	<b>DALI Keypad A</b> Tunable White+ Brightness Dimming	DALI Keypad A - 8 keys, power supplied by DALI bus. - on/off, brightness dimmable and tunable white control. - can set 2 scenes, standard size, easy installation.
	ERI D103A	<b>DALI Keypad B</b> Tunable White+ Brightness Dimming	DALI Keypad B - 8 keys, power supplied by DALI bus. - on/off, brightness dimmable and tunable white control. - can set 2 scenes, standard size, easy installation.
	ERI D101B	<b>DALI Dimmer+Bus Power</b> Brightness Dimming Only	DALI Dimmer+Bus Power - built-in 100mA DALI bus power under AC mains. - on/off, brightness dimmable only - standard size design. - can be powered by DALI bus while not connected with AC mains.
	ERI D102B	<b>DALI Keypad A</b> Brightness Dimming Only	DALI Keypad A - 8 keys, power supplied by DALI bus. - on/off, brightness dimmable only. - can set 4 scenes, standard size, easy installation.
	ERI D103B	<b>DALI Keypad B</b> Brightness Dimming Only	DALI Keypad B - 8 keys, power supplied by DALI bus. - on/off, brightness dimmable only. - can set 4 scenes, standard size, easy installation.
	ERI D105	<b>DALI Bus Power Supply</b>	DALI Bus Power Supply - max. output current 250mA for DALI bus. - DIN RAIL installation.
	ERI D106	<b>DALI Phase Dimmer</b>	DALI Phase Dimmer - AC-AC, 4 channels output, Triac dimmable and mosfet dimmable, Forward-phase and reverse-phase, Minimum brightness setting, DIN RAIL installation.
	ERI D108	<b>DALI Relay Module+ DALI to 0/1-10V Converter</b>	DALI Relay Module + DALI to 0/1-10V Converter - Powered by DALI bus, Capacitive/Resistive loads, DALI bus consumption: 3mA - Max. load AC200-240V LED 300W / incandescent and halogen 1000W. - Output 0/1-10V current 10mA for 0/1-10V LED driver 1mA/piece, Max capacity 10pcs.
	ERI D109	<b>DALI+ Push AC Phase Cut Dimmer 200W</b>	DALI+ Push AC Phase Cut Dimmer 200W - AC100-240VAC, DALI consumption 2 mA - Compatible Load Types Triac Dimmable LED lamps 220-240V 200W
	ERI D110A	<b>4 Group DT8 DALI CCT Dual Color Touch Controller</b>	4 Group DT8 DALI CCT Dual Color Touch Controller - Built-in 100mA DALI bus power under AC mains - Powered by DALI bus while not connected to AC mains. - DALI consumption 4 mA
	ERI D110B	<b>4 Group DT6 DALI DIM Single Color Touch Controller</b>	4 Group DT6 DALI DIM Single Color Touch Controller - Built-in 100mA DALI bus power under AC mains - Powered by DALI bus while not connected to AC mains. - DALI consumption 4 mA
	ERI D111	<b>Mini DALI Power Supply 100mA</b>	Mini DALI Power Supply 100mA - AC100-240VAC, Mini DALI power supply, max. 100mA output - Match all DALI system in the market - Mini size, easy installation into existing wall boxes

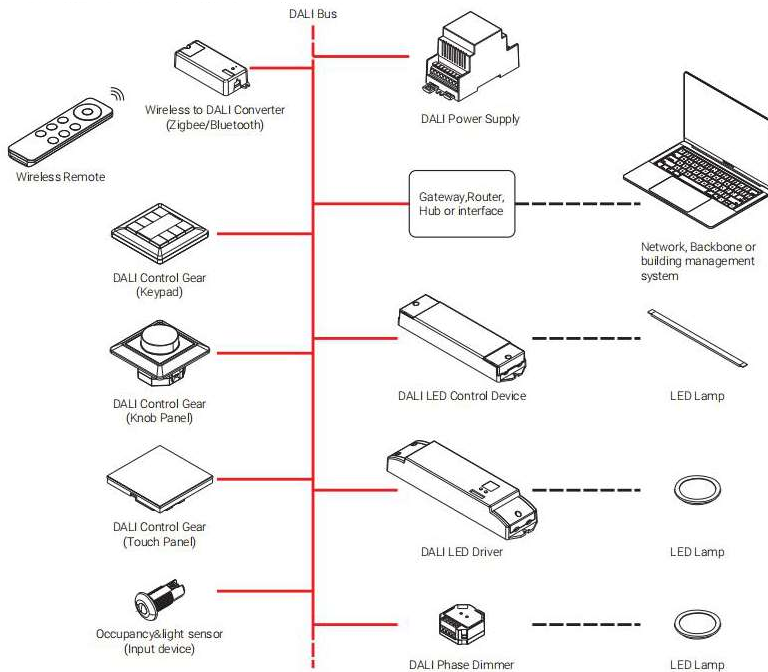


# Remote Control RF 2.4G Wireless

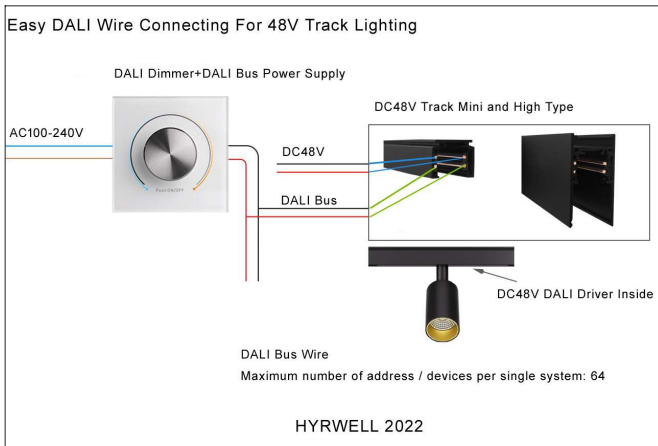
Picture	Modle No.	Description
	ERI J101	Model: ERI J101 Control: 1 Zone Tunable White+ Brightness Dimming, 0.1%~100% smooth dimming Working voltage: 3VDC by CR2032 battery Connection: RF 2.4G Wierless, 30m remote distance from controller to LED light, LED lights quantity no limits
	ERI J102-1	Model: ERI J102-1 Control: 4 Zone Tunable White+ Brightness Dimming, 0.1%~100% smooth dimming Working voltage: 3VDC by 2 pcs AAA battery Connection: RF 2.4G Wierless, 30m remote distance from controller to LED light, LED lights quantity no limits
	ERI J102-2	Model: ERI J102-2 Control: 4 Zone Tunable White+ Brightness Dimming, 0.1%~100% smooth dimming Working voltage: 100-240VAC input Connection: RF 2.4G Wierless, 30m remote distance from controller to LED light, LED lights quantity no limits
	ERI J102-3	Model: ERI J102-3 Control: 4 Zone Brightness Dimming, 0.1%~100% smooth dimming Working voltage: 3VDC by 2 pcs AAA battery Connection: RF 2.4G Wierless, 30m remote distance from controller to LED light, LED lights quantity no limits
	ERI J102-4	Model: ERI J102-3 Control: 4 Zone Brightness Dimming, 0.1%~100% smooth dimming Working voltage: 100-240VAC input Connection: RF 2.4G Wierless, 30m remote distance from controller to LED light, LED lights quantity no limits
	ERI J103-1	Model: ERI J103-1 Control: 1 Tunable White+ Brightness Dimming, 0.1%~100% smooth dimming Working voltage: 3VDC by 2 pcs AAA battery Connection: RF 2.4G Wierless, 30m remote distance from controller to LED light, LED lights quantity no limits
	ERI J103-2	Model: ERI J103-2 Control: 4 Zone Tunable White+ Brightness Dimming, 0.1%~100% smooth dimming Working voltage: 3VDC by 2 pcs AAA battery Connection: RF 2.4G Wierless, 30m remote distance from controller to LED light, LED lights quantity no limits
	ERI J103-3	Model: ERI J103-4 Control: 1 Zone Brightness Dimming, 0.1%~100% smooth dimming Working voltage: 3VDC by 2 pcs AAA battery Connection: RF 2.4G Wierless, 30m remote distance from controller to LED light, LED lights quantity no limits
	ERI J103-4	Model: ERI J103-4 Control: 4 Zone Brightness Dimming, 0.1%~100% smooth dimming Working voltage: 3VDC by 2 pcs AAA battery Connection: RF 2.4G Wierless, 30m remote distance from controller to LED light, LED lights quantity no limits
	ERI J103-5	Model: ERI J103-4 Control: 8 Zone Brightness Dimming, 0.1%~100% smooth dimming Working voltage: 3VDC by 2 pcs AAA battery Connection: RF 2.4G Wierless, 30m remote distance from controller to LED light, LED lights quantity no limits
	ERI J104	Model: ERI J103-4 Control: 8 Zone Tunable White, Brightness Dimming, RGB, RGBW or RGB+CCT RF LED controller Working voltage: 3VDC by 2 pcs AAA battery Connection: RF 2.4G Wierless, 30m remote distance from controller to LED light, LED lights quantity no limits

# DALI Control, Wired Connection

An Example Of A DALI Lighting-control System



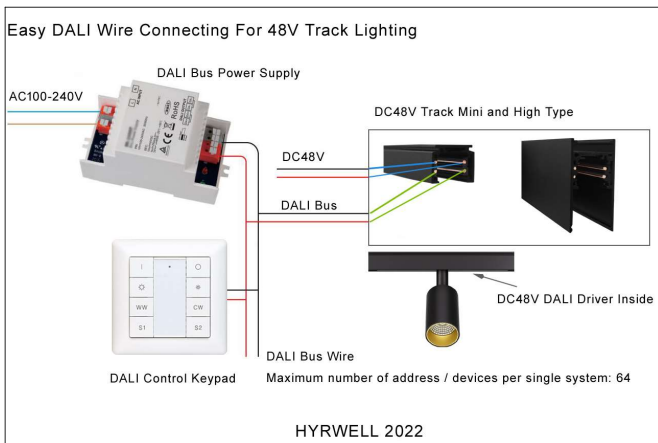
## Easy Connecting Ways Of DALI Smart Lighting



## Basic Parameters Of DALI Protocol

Basic Parameters of DALI Protocol

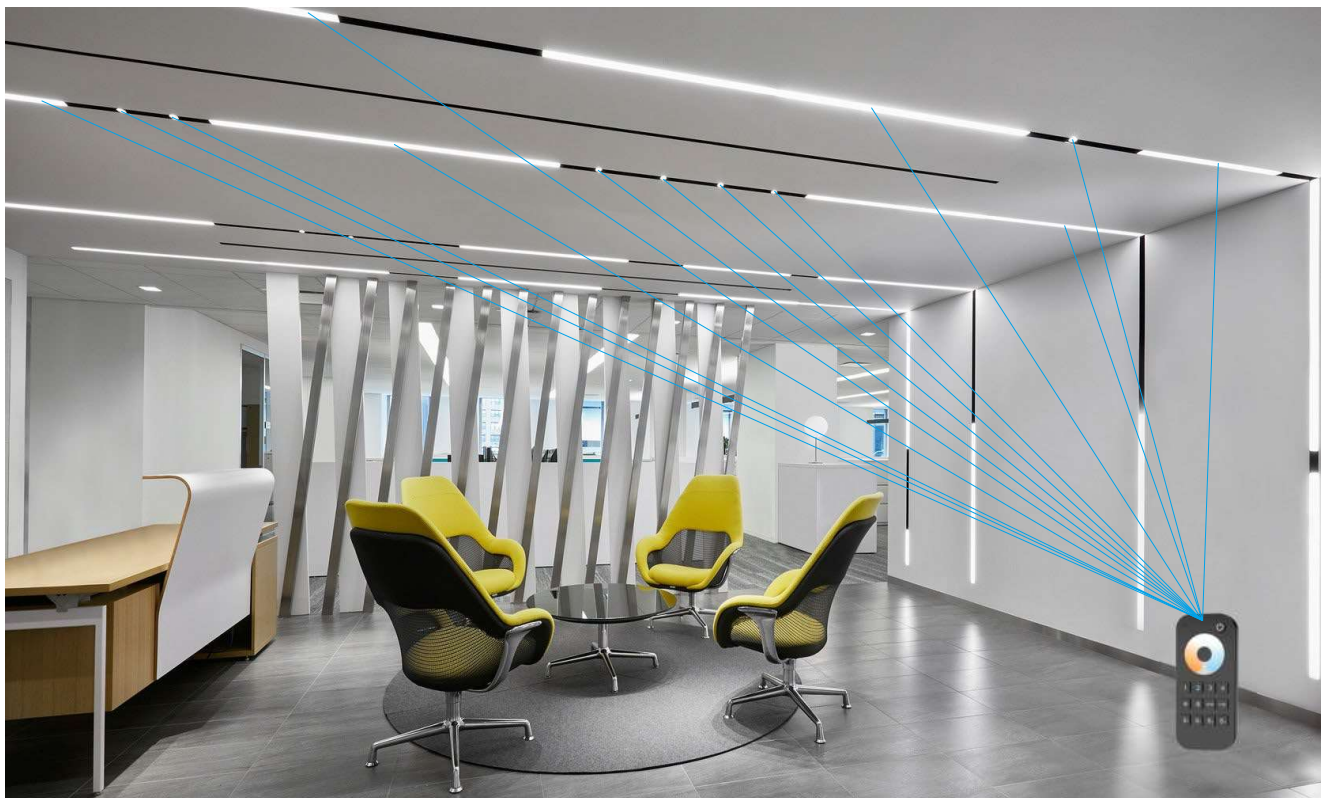
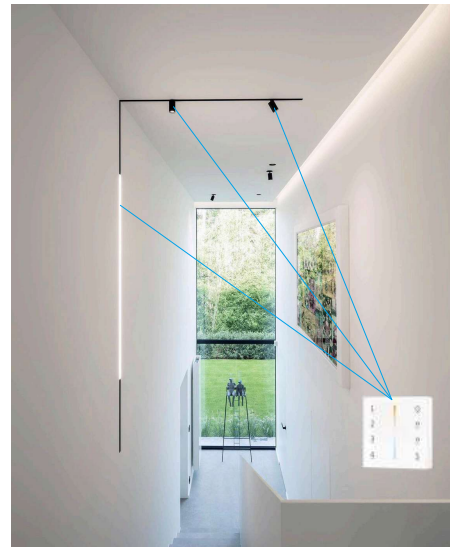
DALI Signal Voltage	High Voltage : 9.5-22.5 V Low Voltage : -6.5 - (+)6.5 V
System Current	Max : 250mA
Data Transmission Speed	1200 bps
Maximum Cable Length	300 m, Related to wire diameter
Cable Type	1.5 mm <sup>2</sup> , Related to wire diameter
Maximum number of address / devices per single system	64
Maximum number of lighting scenes per single system	16
Maximum number of groups per single system	16



# RF Remote Control, Wireless

## Why RF Remote Control?

- RF remote control solution is easy for smart lighting, remote controller connect each lights directly by RF 2.4G wireless signal, no wiring required.
- RF remote control solution is more cost effective than DALI or CASAMBI for smart lighting. The controllers and lights cost less, more acceptable price for customers.
- Easy to use, no need professionals to set up, control a luminaire to turn it on or off, adjust brightness, colour temperature, or control all lights by several groups and save lighting scenes.



# Allure Verlichting

Allure Verlichting  
Address: Handelsweg 6  
Postcode: 7641AC Wierden  
Tel.: 0031 (0) 546 579 005

Email: [info@allureverlichting.nl](mailto:info@allureverlichting.nl)  
Web: [www.allureverlichting.nl](http://www.allureverlichting.nl)

Version 04/2023